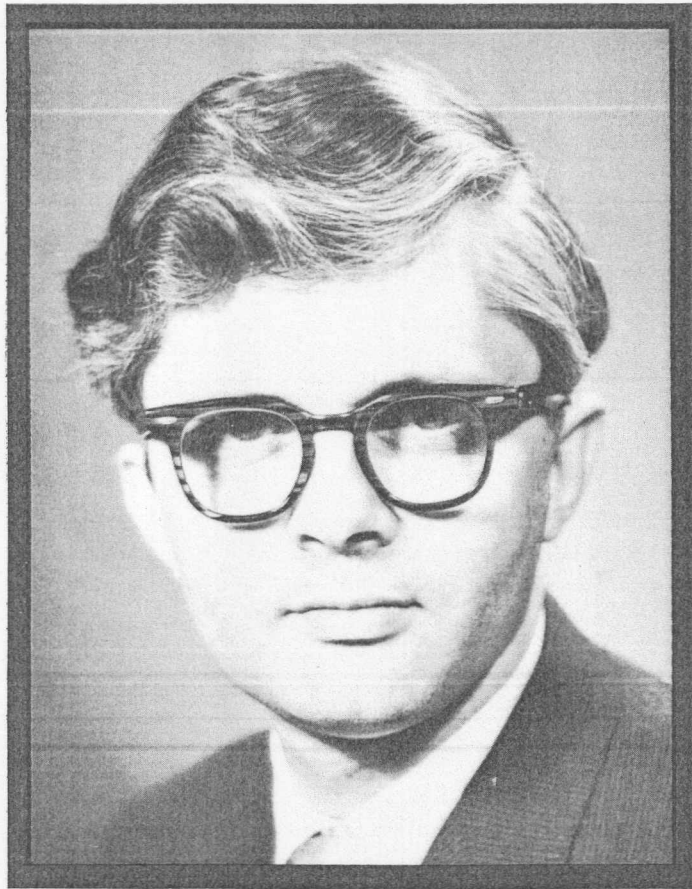


'The Time has Come!'



for the
**MOORES
TEAM**

**BILL
MARSHALL**

ST. JOHN'S EAST

**OCTOBER
28th**

VOTE 

**P
r
o
g
r
e
s
s
i
v**

Conservative

Policies for People

Resource Development *For You*

"We will build our province through becoming better at what we already know, based upon the resources at our doorstep ..."

Set-up reprocessing plants to ensure our people more permanent jobs in the fishing industry.

Establish inshore fishing zones where draggers are prohibited.

Insist on Canadian control of The Continental Shelf to prevent further depletion of our fish stocks.

A new fisheries credit program to enable fishermen to obtain gear and operating capital.

Support the fishermen in their collective bargaining efforts.

Encouragement of saw mills to turn out wooden building materials required at home.

Planning a program of exploration with reputable mining companies.

A commission to encourage and oversee mining exploration in Newfoundland and Labrador.

Creating opportunities in agriculture combined with incentives to assist farmers to store and market their products and establish equipment banks.

A goal of becoming self-sufficient in those crops which grow well in the Province.

Consultation with the people concerned when considering future policies relating to our resource industries.

Economic Development *For You*

"We will create new, permanent jobs, and through incentive to business and industry a P.C. Government will enable Newfoundlanders to share in the resources of their Province ..."

Establish a common sense Department of Economic Development to decide what business and industry can best be developed in Newfoundland and Labrador; to attract the right kind of business and industry; and to decide what sensible government assistance should be given to make a particular enterprise a success.

Create a special branch of the Department of Economic Development to encourage small business with special encouragement to Newfoundlanders across the Province to develop business and industry which favours our own people.

Establish an Advisory Economic Council, representing all groups and regions in Newfoundland and Labrador.

Work to prevent the export of our raw, natural resources, for as much as possible these should be processed in Newfoundland and Labrador to provide employment for our people.

Encourage Newfoundlanders across the Province to develop business and industry, and favour Newfoundlanders wherever possible rather than outside promoters.

JOIN THE MOORES TEAM

Rural Development *For Your Community*

"We are proud of our smaller communities. We will encourage and support their development. The lives of our people will not be uprooted by a system which ignores the human being ..."

Promote rural development wherever sensible by encouraging sound development of the resources of the area.

Consultation with the people concerned in planning the futures of our smaller communities.

Provide incentives to our people to use their natural talents in developing their own community industries.

Develop a tourist program which captures the true Newfoundland.

Introduce an educational T.V. network, combined with increased pay to teachers to teach in smaller communities.

Grants to local development committees and low interest loans for home improvement.

Equal health and social services to our rural areas.

Create a Young Newfoundland Service Corps, to assist in local development.

Quality of Life *For Your Family*

"Every person in Newfoundland is important. His education, his health, his welfare are important. We shall work hard to create a Newfoundland where all people can pursue their lives with pride and dignity ..."

A balanced education program that considers equally the needs of the elementary and high-school systems; Memorial University and the Technical and Vocational Schools.

An educational system that expands in new directions—adult education programs, community colleges—to provide Newfoundlanders with the opportunities to acquire the skills they will need to build a better Newfoundland.

Taking services to the people—medical, dental, governmental and social—with mobile units.

Priority planning in terms of hospitals, convalescent homes, senior citizens homes and community health centres.

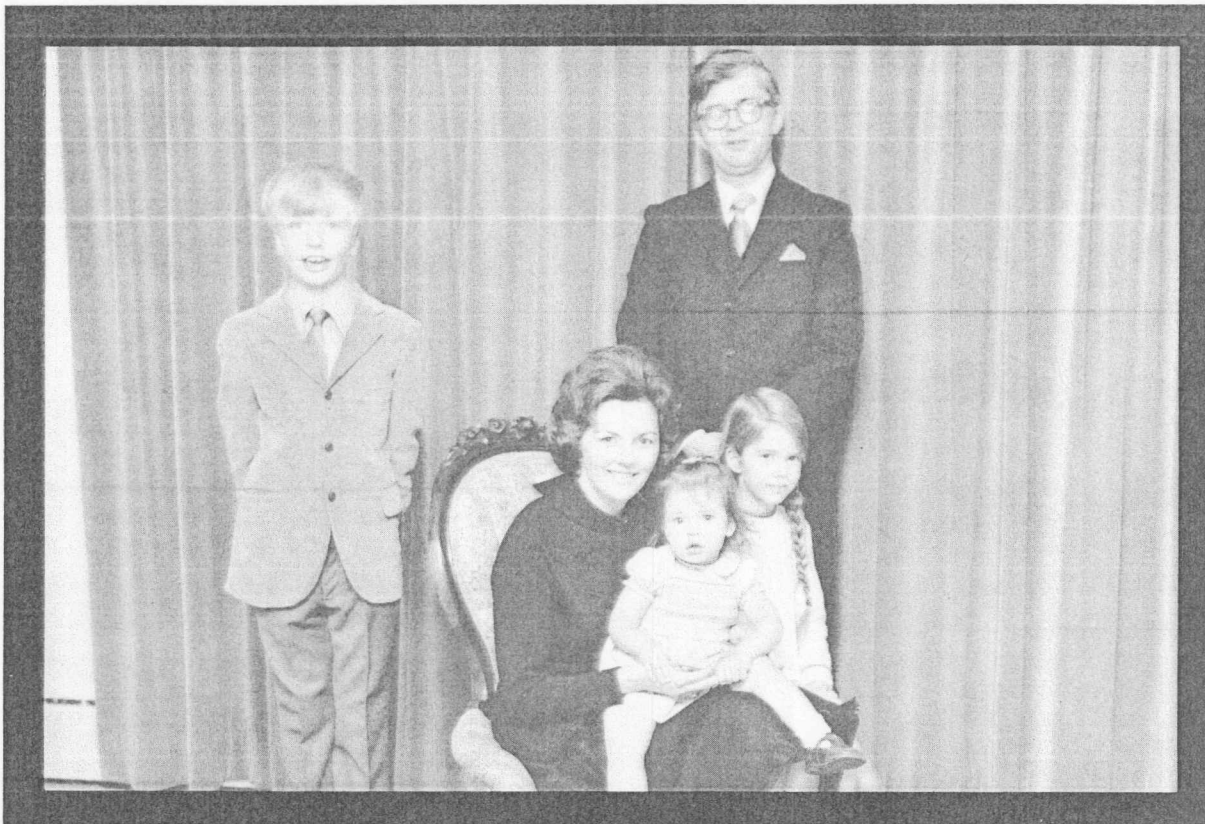
Maintain and improve the present social security system, providing greater opportunities for those who can work, and continued assistance to those who require it.

A goal of decent housing for all Newfoundlanders, through low rental housing; government serviced land; urban renewal schemes; and improved housing for those on social assistance.

Proper pollution control will be enforced in all areas of our society.

Recreational facilities will be improved and expanded.

**Ask your PC Candidate
What he can do for you**



Bill Marshall was born in St. John's on August 23rd, 1935. He is the son of Walter M. and Gertrude Marshall.

He received his early education in St. John's East, having spent his childhood on Queen's Road. Mr. Marshall entered Memorial University of Newfoundland in 1952 and received his Bachelor of Arts in Economics and Political Science from the University, King's College at Halifax in 1956. While at University he was active in debating societies. In 1958 he was one of the four Canadian students qualified for the Canadian University Debating Finals.

In 1958 he entered practice of law in St. John's where he continues to practice. While practicing law, he was a part time member of the faculty of Memorial University and for five years held the position of part time assistant professor in the Department of Commerce at Memorial University.

He has taken an active interest in charitable and Church organizations. He served on the Board of Anglican Homes for a number of years and is a former chairman of the board of directors of that institution.

Bill Marshall became active with the Conservative Party in 1967. In 1968 he was elected Eastern Vice-President. In 1969 he was appointed policy chairman by previous Leader of the Opposition and in November 1969 he was appointed interim leader of the Party. In June 1970, he was elected as a P. C. member for St. John's East. During the past year in the legislature he spoke out on many issues vital to the District and to the Province and took measures to bring forcibly to the attention of the legislature such issues as the inadequate housing conditions, the need to abolish secret cabinet borrowing and to strengthen the civil service. He took strong stands on the conservation of fish stocks in the North Atlantic and many other items of great public concern and attention by introducing them as private member bills and resolutions.

He is married to the former Joan Rooney.

MARSHALL, BILL

X