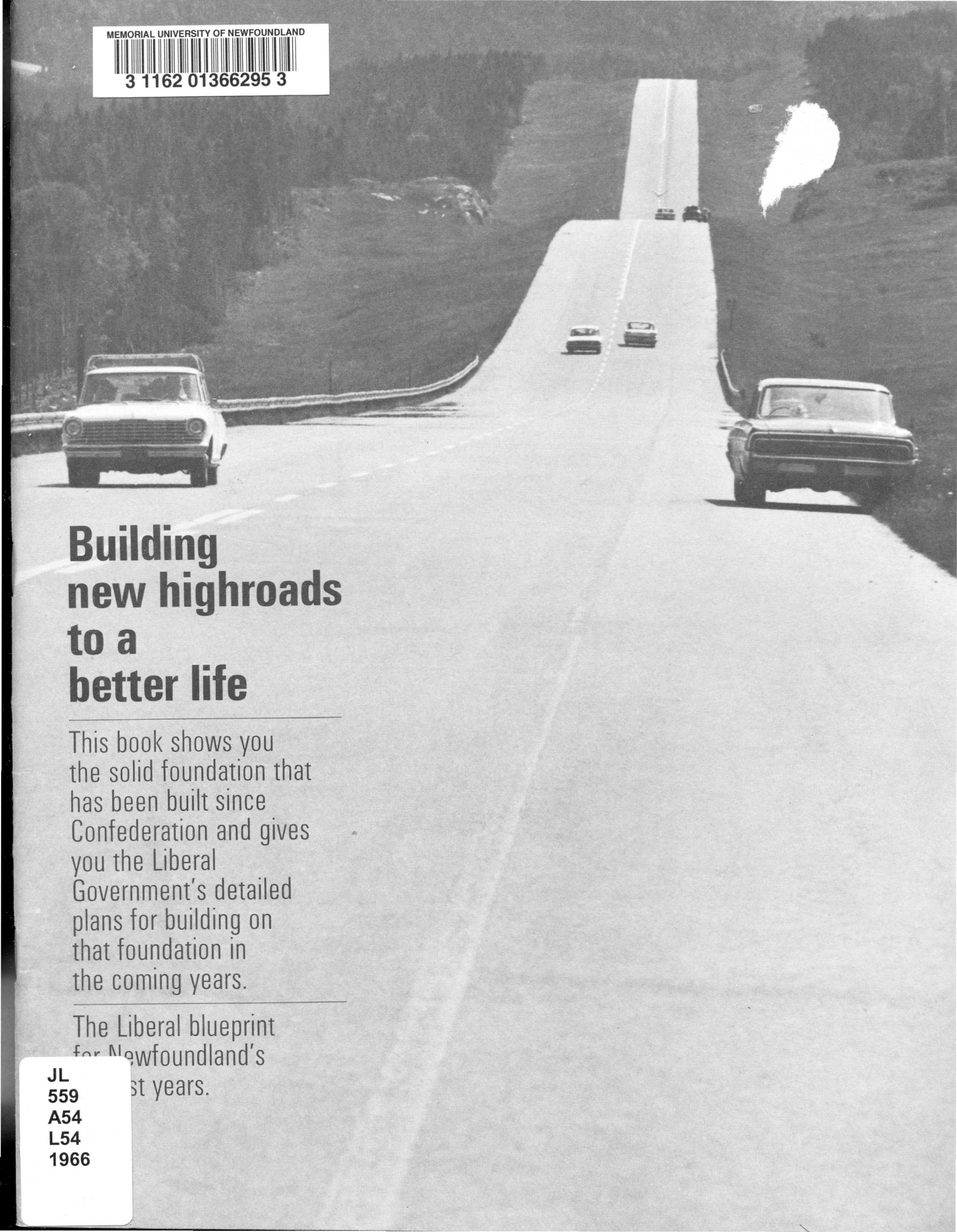




3 1162 01366295 3



## Building new highroads to a better life

This book shows you the solid foundation that has been built since Confederation and gives you the Liberal Government's detailed plans for building on that foundation in the coming years.

The Liberal blueprint  
for Newfoundland's  
next years.

JL  
559  
A54  
L54  
1966



I have been  
waging war  
against poverty  
in Newfoundland  
and Labrador  
from the moment  
I started the  
campaign for  
Confederation and  
from the moment



JL  
559  
A54  
L54  
1966

I became Premier of the new Province.

I have fought this war as leader of a band of loyal supporters and friends in the Liberal Party and in the Liberal Government. They have upheld my hand, inspired me always to greater strength and endeavour.

This war against poverty has been fought, and will be fought in many ways, on many fronts.

There are many battles in this war.

We fight the war against poverty by giving our people a better chance to get a good education. We fight it by giving them a better chance to have good health. We fight it by building roads, airstrips, and a thousand other public services and conveniences.

We fight the war against poverty by opening up new mines, new forest industries, new land development, and building new factories.

The war is carried on by developing our fisheries and giving our fishermen a better chance to make a living, and a better chance to enjoy a good life.

It is not only by social assistance to the sick, the crippled, the widows, the orphans, the handicapped children, the blind, and other Newfoundlanders who have not been so fortunate as others that we fight the battle against poverty.

It is rather by the development of our resources, by opening up our Province, by bringing in new capital for investment here, by making Newfoundland the kind of Province that will attract businessmen from both sides of the Atlantic.

A few people have been short-sighted enough, thick-headed enough, to think that when I try to bring a great fish company into Newfoundland to build a great fish plant, it is because I want to do that company a favour. Such people are too stupid to realize that it is not for such companies, but rather for the wages that will be paid to our people in such industries, that the Liberal Government strives so hard.

The way to wage war against poverty is not to

make speeches. It is not to shed blood. It is not to practice or encourage physical violence. It is rather to promote, help, encourage economic development of the Province. In no other way can jobs be created. And without jobs there are no wages—there *is* poverty.

Since I became Premier of the new Province I have led the Liberal Government in a very strenuous campaign to lay a broad and strong foundation for a great and prosperous Newfoundland.

That is exactly what we have been doing—laying a great and solid foundation.

It is a foundation that will bear up the richest and greatest Province of Canada.

It is a foundation of which every Newfoundlander can be deeply proud.

Now the greatest job of all is here to be done: TO BUILD UPON THAT FOUNDATION. This is the task of the months and years immediately ahead. All other tasks are merely side-lines, merely child's play. This is the task that calls for energy, enthusiasm, ambition. Above all, it calls for quenchless devotion to the cause of Newfoundland, the cause of the Newfoundland people.

It is a lie to say that the task is easy; a lie to say that it can be done easily, by anybody.

It calls for experience and wisdom and patriotism linked to youth and idealism and impatience and super-abundant energy.

This is the Party that I lead in this election, and this is the Party that will form the next Government if permitted by the Newfoundland people to do so.

We submit ourselves humbly to the will of the people.

*Joseph R. Smallwood*

JOSEPH R. SMALLWOOD  
Leader of the Liberal Party

## Where will the money come from?

It is now costing over Two Hundred Million dollars a year to provide this Province's 500,000 people with education, public health, roads, and the dozens of other services that they must have.

In the next five years this will run to a total of over One Billion dollars.

That is, if the amount does not increase one year after the other, as it has done every year since Confederation.

Well over half of this money is paid to the Newfoundland Government each year by the Government of Canada.

Another large part of it comes to the Newfoundland Government from the sale of goods and services, and for the sale of licences and permits of many kinds.

One-quarter of it comes from direct taxes collected from the people by the Newfoundland Government.

All of these present sources of Newfoundland Government income will increase steadily, year after year:

GOVERNMENT OF CANADA: Payments from Ottawa have gone up every year, and are now many times more than they were at the beginning of Confederation, and will automatically increase annually.

GOODS AND SERVICES: These will continue to grow, and the revenue from them will increase, as our population increases and our standard of living rises.

LICENCES AND PERMITS: The same is true of revenue from this source.

NEWFOUNDLAND GOVERNMENT TAXES ON THE NEWFOUNDLAND PEOPLE: The revenue from this source will increase steadily, *not* by an increase in the rates, but because our people's earnings will rise steadily.

But great as these sources of revenue are, and much as they will grow, they are not the best and biggest sources of future revenue for the Newfoundland Government.

The greatest source will be the revenue that will

come from the development of our natural resources.

The beginning of this is ELECTRIC POWER from Bay d'Espoir, from the Churchill, and from several other huge water-sheds in Labrador.

The Churchill development will bring directly to the Newfoundland Government more than Twenty Million dollars every year, directly into the Province's Treasury; and development of other water-power in Labrador will double that amount.

But even these direct payments to the Government will not equal the revenue that the Government will receive out of the industries that will be based upon this power, or the portion of the power that will come to this Island.

And *power* is only one mighty source of future revenue. There are our vast forests, and the Newfoundland Government's revenue from the pulp and paper industry will climb steadily as ever more men and women are employed in that industry.

Much new revenue will come to the Government of Newfoundland through the development of our mines. The mining industry is only now beginning to pay large sums into our Treasury. (This refers only to the direct taxes from the mining companies. These amounts have been smaller in the past, due to their tax concessions in the early stages of their production, and they will be increasingly larger from now on.) But it is not only the direct revenue that the Government receives from the companies themselves—it is the revenue received in a dozen ways, directly and indirectly, from the great employment that is given in the industry. This will increase greatly in the coming years.

Our population is growing very fast; our birth rate is the highest in Canada; our death rate is the lowest in Canada; the health of our people is improving rapidly; they are becoming a far more educated people; new skills are being developed in our vocational schools, and our Technical Colleges and University.

## PAYING FOR NEWFOUNDLAND'S PROGRESS

A vast increase in the development of our great natural resources is bound to be the result of increasing skill and efficiency in our population.

The combination of people and resources will give the Newfoundland Government greatly increased sums of revenue that will enable the Government to return the money to the people in the form of ever better schools, ever better hospitals, ever better roads, and many other good and useful services and conveniences.

From its birth in Newfoundland, just under 150 years ago, the Liberal Party has been the Party of economic development, of education development, of public health development, and of road development.

Development of Newfoundland for the people of Newfoundland has always been the chief article of faith of the Liberal Party.

Pulp and paper are Liberal words in Newfoundland. The Liberal Party put them in the Newfoundland vocabulary—Bond, Squires, Smallwood. Cement is a Liberal word in Newfoundland. Gypsum plasterboard are Liberal words. Oil refining are Liberal words. Steel making are Liberal words. Ammonia and phosphorus, and steel ship building, and great modern fish processing plants—all of these are words that were put into our Newfoundland vocabulary by the Liberal Government. This is no accident.

And not even one of all these industries met with the approval of the opponents and enemies of the Liberal Government; not one.

Every new industry was condemned, sneered at, falsified. If the Liberals had listened to their opponents there would have been no pulp and paper mills, no great fish plants, no modern industrial factories in this Province today.

**From 1950 to 1964  
inclusive total  
personal income in  
Canada as a whole  
increased 161%.**

**In exactly the same  
period personal  
income in  
Newfoundland  
increased 194%.**

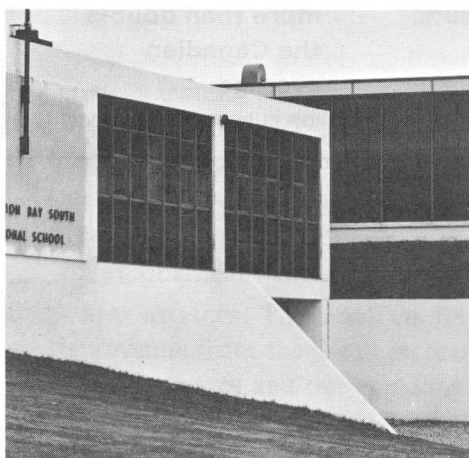
(FIGURES PUBLISHED BY DOMINION BUREAU OF STATISTICS)

**From 1950 to 1964  
inclusive the amount  
of new capital  
investment in the  
whole of Canada  
increased 130%.**

**In the same period  
new capital  
investment in  
Newfoundland  
increased 266%, or  
more than double  
the Canadian  
average.**

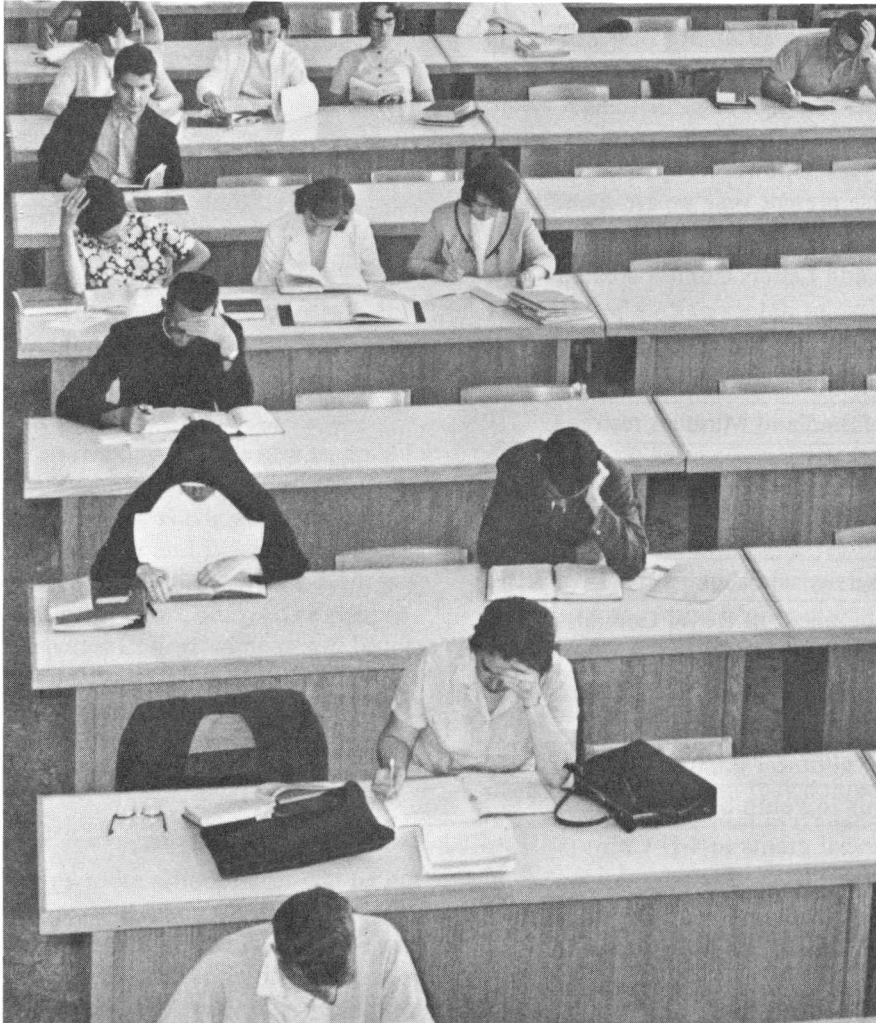
(FIGURES PUBLISHED BY DOMINION BUREAU OF STATISTICS)

## EDUCATION



## EDUCATION

Here is the  
foundation  
we have built



**Led by the Liberal  
Government  
Newfoundlanders  
have been building  
a great new pride  
in education**

---

Memorial University created (1949).  
Raymond Gushue appointed President (1952).

---

New campus built for Memorial University (1962).

---

New campus enlarged.

---

Six new Student Residences (1966).

---

Marine Biology building, Logy Bay (1966).

---

Financial help for Students' Union Building (1966).

---

Free tuition for all students at Memorial University (1966).

---

Salaries for all students, commencing with 5th and 4th years (1966).

---

Lord Taylor appointed President (1966).

---

1000 schools built, enlarged, or rebuilt.

---

Technical College created (1962); opened 1963.

---

Eleven Vocational Schools built (1962).

---

College of Fisheries, Navigation, Marine Engineering and Electronics created (1963).

---

School for deaf students created (1964).

---

School for crippled children created (1945).

---

Regional high schools policy launched (1953).

---

Central high school policy launched (1958).

---

School bus system introduced (1954).

---

1,300 new scholarships and bursaries granted each year.

---

Subsidy on school books.

## EDUCATION

\$1.50 monthly allowance to all children at school (1966).

Annual grant to school boards for construction of new schools increased from a half million dollars yearly to one million dollars yearly; from one million to two million; from two million to four million dollars yearly.

School maintenance grants greatly increased (1958).

School library grant introduced (1958).

Science, Domestic Science Grants and Commerce Grants introduced (1958).

Movies introduced into schools.

Radios introduced into schools.

Bus transportation for retarded children (1965).

Bursaries granted to retarded and otherwise handicapped children (1966).

Special training grants to teachers of retarded children (1965).

Special living allowance granted to retarded children at school (1965).

Check-off granted to N.T.A. for payment of their dues (1952).

New Teachers' Pension Plan (1950).

Teachers' loan fund created (1957).

Teachers' homes fund created (1960).

In our first year in power we spent 11% of the public money on education. This year it will be 22%.

In our first year in power we spent on education an amount equal to \$11 per capita of our whole population. This year it is \$85 per capita.

In our first year in power we spent an average of \$49.49 for every student

in the Province. This year we are paying \$287 for every student.

Since we came in power we have spent a QUARTER OF A BILLION dollars (\$242,000,000) on education. In our first year in power we spent \$3,000,000. In this present year we are spending \$44,000,000.

Arts and Letters Contest created (1950).

Department of Newfoundland Archives created.

Newfoundland Museum restored.

Regional Library system expanded.

Teacher training grants greatly increased (1965).

University scholarships created (1957).

Appointment of Royal Commission on Education and Youth (1964).

Financial assistance to blind children greatly increased.

Physical fitness grants.

Grants to youth organizations.

Financial grants to 4-H Club Movements.

Greatly increased grants to students at Vocational Schools (1966).

Teachers' salaries increased 7 times.

Institute of Education created (1966).

International Conference on Electronic 'Aids' in Education (1966).

Arts and Culture Building started (1966).

In 1945 only 47% of grade 3 students reached grade 9. In 1963 this had increased to 81%. (Nova Scotia: 53% to 78.3%; P.E.I.: 60% to 75%; New Brunswick; 40.5% to 71%).

## EDUCATION

Here is the  
Liberal Blueprint  
for the future

## The Liberal Party's 29 point program for improving the standards of our education

**1**

We will wipe out illiteracy.

**2**

We will build or rebuild 500 new schools.

**3**

We will build six new Vocational Training Schools.

**4**

We will build a great new campus for the Technical College and the College of Fisheries, Navigation, Marine Engineering and Electronics, which will combine these two Colleges into one great new College. The present Fisheries College campus will become a Vocational Training School, and the present Technical College will become a school for pre-trade and apprentice training.

**5**

Many more school buses will be put in use, and many thousands more children will be carried by these buses. They will be of an improved type of buses, and the roads over which they travel will mostly be paved.

**6**

Considerably larger grants will be given for school libraries.

**7**

The grant of four million dollars a year now given to the churches and school boards for the building of new

schools will be brought quickly to six million, and soon afterwards to eight million dollars a year. This will enable many hundreds of beautiful new schools, well furnished and equipped, to be built all over the Province.

**8**

The grant of \$1.50 a month to every child attending school will be doubled, and then increased a second time soon after.

**9**

Teachers will be offered new opportunities and facilities to improve their teaching qualifications and thereby be entitled to receive higher rates of salary.

**10**

Salary rates for all teachers will be steadily increased until they compare favourably with the best in Canada.

**11**

An improved pension plan for teachers will be introduced.

**12**

We will increase considerably the number of central and regional high schools, and their standard will be raised considerably.

**13**

There will be a sharp increase in the numbers of scholarships and bursaries awarded by the Government.

**14**

Special grants will be given to many of our schools to pay for vocational guidance of the students. Special attention will be given to the whole matter of efficient vocational guidance in our schools.

**15**

Special facilities and opportunities will be provided for the greater encouragement, and skilled training, of exceptionally gifted students. This will be especially carried out for children with special talent in music and art.

**16**

Special opportunities will be created in all of the larger schools of the Province for vocational training. These opportunities and facilities will be in addition to those given at the special vocational training schools themselves.

**17**

The revolving fund that has been provided to help School Boards to get homes for their teachers will be greatly increased and a strong effort made to ensure that every teacher intending to remain in the teaching profession can have a suitable home.

**18**

A determined campaign will be launched to provide the teachers of Newfoundland, in the schools of this Province, with the latest and best

TV and electronic training aids to be found anywhere in the world. These new aids to teaching will be of vast benefit, not to the teachers alone, but especially to the thousands of school children, and above all to the school children in the small schools in small places. By this means children in even the smallest settlements will have the advantage of learning from the best of our teachers.

### 19

The Government will seek from the Legislature an amendment to the Memorial University Act to allow a chosen representative of the N.T.A. to be appointed by the Government to the Board of Regents of Memorial University.

### 20

A sharp increase will be made in the grants given to schools throughout the Province to increase and improve the athletic and recreational facilities.

### 21

Our aim and intention are to give every boy and girl an equal chance with the children of other Canadian Provinces to get a good education, of

the kind that will best equip them to live good lives and earn a good living. This may mean better vocational training, or better vocational guidance; it may mean a better chance to attend the Technical College or the College of Fisheries; it may mean a chance for the specially talented child to get special training in art, music or science; or it may mean an even better chance than there is today to attend university. No child must be denied or cheated out of a chance to develop his talents to the limit, for this Province cannot afford such grievous losses of human skill and talent. A great effort must be made to raise the **QUALITY** of education, and we must forever be on the alert to find the best ways of doing so.

### 22

While we will never cease our efforts to build up higher education (to bring Newfoundland fully abreast of the most modern Provinces) we will make even greater efforts to improve higher education institutions (the University, etc.) with an ever-improving standard of students by means of an ever-improving system of elementary and high schools. It is our determined policy to give to Newfoundland elementary schools and high schools that will be excellent in themselves and at the same time provide the institutions of higher learning with the ever increasing number of well-prepared students pouring out of the elementary and high school system.

We denounce as futile any attempt

to balance elementary and high school education against technological and university education. Both are indispensable, and Newfoundland cannot afford to do without either.

The Liberal Government have striven to be the friend of education in Newfoundland. The effort will be renewed and intensified.

### 23

We will embark upon a programme of considerably increased grants for regional libraries throughout the Province, so that all communities in the Province will have reasonably convenient access to a public library.

### 24

A special grant will be given to enable school boards, over a period of years, to beautify their school grounds and surroundings generally.

### 25

The Department of Education will be given funds for the employment of school-design and school-construction specialists whose services will be made available to all Boards or others erecting new schools.

### 26

We will, in very close and friendly co-operation with the relevant authorities, seek to bring about greater use of educational institutions throughout the twelve months. Vast capital sums

have been poured into the construction of these buildings, and even vaster sums will have to be poured into them. It seems reasonable to think that these buildings and facilities might be used for more days of the year than they are at present.

### 27

Memorial University of Newfoundland is a thoroughly independent institution, and the Government's main connection with it is to provide it with necessary buildings and facilities and to pay its bills. The Government are advised in that particular aspect by the Board of Regents, appointed by the Government.

The Government will, if it be the wish of the authorities of the University, pay the costs of a number of new Faculties. Among these might be:

- Post-graduate College of Medicine
- Graduate College of Medicine
- College of Engineering
- College of Law
- College of Commerce
- College of Public Administration
- College of Social Work
- College of Forestry
- College of Geology and Mining
- Institute of Education
- and others as the need and occasion arise.

We are quite certain that the Newfoundland people are anxious to

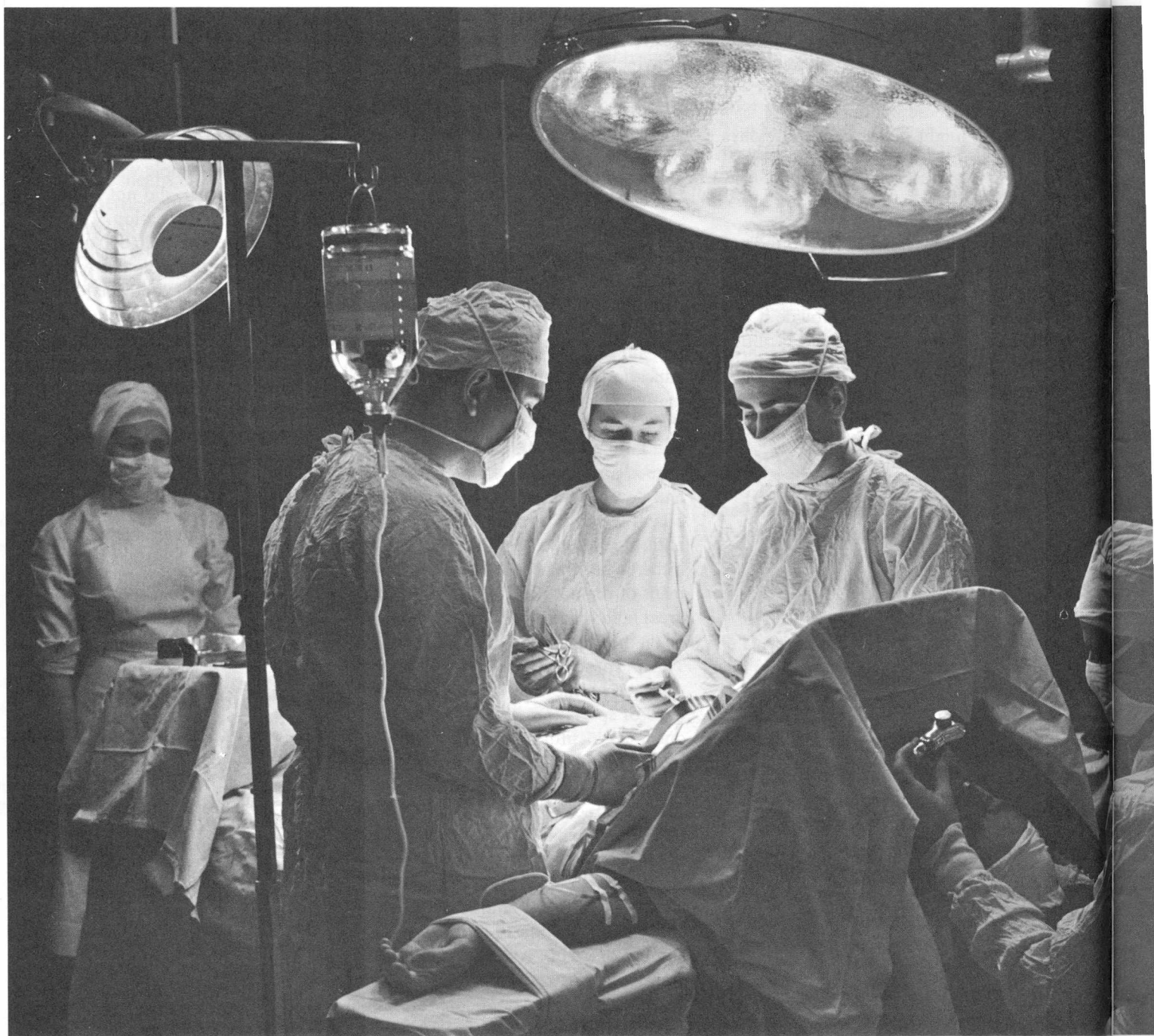
have a great and distinguished University to serve them and the Province, and it will be for us always a profound pleasure, as representatives of the people, to give unending support to Memorial.

### 28

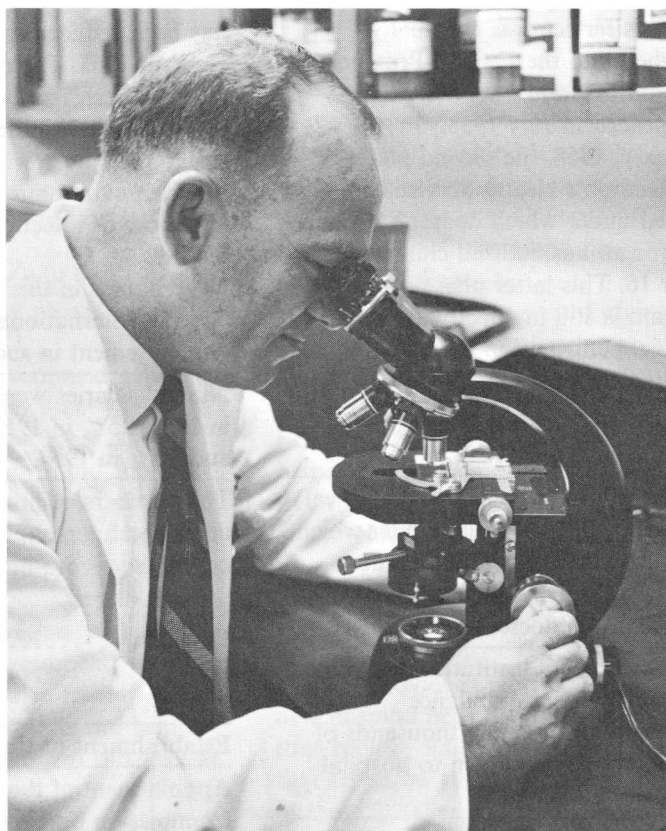
Labrador is a special case. It is a vast land, thinly populated. It has a heritage of neglect and forgetfulness from most of Newfoundland. We are determined that special attention will be paid to Labrador's needs in education, and special efforts will be made to devise a system of education that will try to remedy the defects and failures of the past and be so shaped and operated as to conserve and develop the human resources of a land which is already so rich in natural resources. Emphasis has hitherto been placed on the development of the natural resources of that great land, but the new emphasis must be on the human resource of Labrador. This purpose may possibly be achieved by the creation in Labrador itself of special branches of some of our great institutions of education, or possibly by a system of extra and special subsidies, bounties, free travel and allowances for students in Labrador to enable them to take full advantage of the institutions that already exist on the Island of Newfoundland. An additional possibility is the creation of an increased number of school residences in the more populous centers of Labrador to which students would come from the more remote parts of that vast land.

### 29

The Government will make a determined effort to remove a serious weakness in our Newfoundland life, consisting of a large number of Newfoundland people who, for one reason or another, did not succeed in obtaining a fair education. There are believed to be about 20,000 adult persons, or young men and women, who did not get beyond the lowest grades in school. Their lack of an elementary education is a very serious obstacle to their own welfare and to the well-being of Newfoundland in general. These citizens may be regarded as the last remaining number of a body of people who, in earlier years, numbered four or five times as many. It should not be beyond the capacity of the Government, with willing help from all other bodies concerned, to remove this weakness from our community life.



Here is the  
foundation  
we have built



The Government have built, or have given strong financial aid in the building of, new hospitals at:

Baie Verte  
Port-aux-Basques—Channel  
Corner Brook General  
Fogo  
Grand Falls  
Labrador City  
Springdale  
Children's Hospital  
St. Clare's Hospital  
Burin  
Grand Bank  
Placentia  
Bell Island  
St. Luke's Homes  
Carbonear  
Corner Brook Sanatorium  
Corner Brook Nursing School  
Gander  
Happy Valley  
North West River  
St. Anthony  
Grace Hospital  
Brookfield  
Come-by-Chance  
Old Perlican  
Stephenville Crossing  
Children's Rehabilitation Centre  
St. Patrick's Mercy Home

---

Nurses' Residential Training School,  
Grace Hospital  
Nurses' Residential Training School,  
General Hospital

---

These institutions have 2236 hospital beds and the three nurses' training schools have accommodation for 675 students.

---

The Government have built, or provided most of the money for Nursing Stations as follows:

# A proud record of achievement in hospitals and public health

Conche  
Englee  
Hopedale  
Lamaline  
Makkovik  
Port Saunders  
Roddickton  
Trepassey  
Cow Head  
Harbour Deep  
Jackson's Arm  
LaScie  
Nain  
Ramea  
St. Bride's  
Woody Point

The Government have built, or provided most of the cost of, medical clinics and residences at:

Aguathuna  
Carmanville  
Doyle's  
Ferryland  
Green's Harbour  
Hermitage  
Jeffrey's  
St. Albans  
St. Joseph's  
Belleoram  
Catalina  
Eastport  
Gambo  
Hampden  
Heart's Content  
Lourdes  
St. George's  
New World Island

The Government in 1957 instituted the initial phase of North America's first and only Children's Health Service under which all hospital bills were paid for all children up to the age of

16. (This service was eventually absorbed into the Federal-Provincial Hospital Insurance Service which commenced in July 1958.) In February, 1958, the second phase of the Children's Health Service commenced under which doctor's bills are paid for all hospitalized children under 16. This latter phase of the program is still in effect without any financial contribution from the Government of Canada.

The Government introduced the Hospital Insurance Plan.

The Government created the Medical and Dental Training Plan under which some 300 young Newfoundlanders are to be trained, at Government expense, to be doctors and dentists.

The Government instituted and greatly enlarged the Air Ambulance Service, in which many thousands of patients have been flown to hospital and many lives saved.

The Government greatly expanded the Medical Boat Service, a sort of marine floating clinic, in which doctors and nurses have visited many thousands of patients.

The Government instituted, in a number of schools, the Children's Dental Inspection and Treatment Service. Only the scarcity of dentists willing to work in this service has retarded the more rapid expansion of the service.

The T.B. death rate\* has been reduced from 104 in 1948 to 5 in 1964. The general death rate in Newfoundland has been reduced from 12 in 1949 to 7 in 1964. The infant mortality rate

has been reduced from 59 in 1948 to 28 in 1965. The maternal mortality rate has been reduced from 20 in 1949 to 4 in 1964. Diphtheria and whooping cough have been wiped out. There have been dramatic reductions in the incidence of infectious and contagious diseases.

\*The figures in this section are based on the International system of measurement in such cases.

Nurses' salaries were raised 35% in 1953, 25% in 1957, 25% in 1960 and 20% in 1964.

The numbers of professional medical and dental personnel have increased as follows:

	1948	1966
Doctors . . . . .	143	339
Dentists . . . . .	20	50
Nurses . . . . .	350	1229

Establishment of Cancer Clinic.

Appointment of the Lord Brain Royal Commission on Health.

Here is the  
Liberal Blueprint  
for the future

## Medicare, 1700 new beds, improved medical training in the Liberal programme

### 1

The Government will launch a great new health and hospital programme that is intended to bring complete and adequate medical, surgical, dental and optical service to the entire population.

This programme will bring these services within easy physical distance of every citizen.

The Liberal Government of Canada are bringing in their great Medicare programme, and the Liberal Government of Newfoundland will not only adopt and carry out Medicare, but will erect the hospitals and institutions, and provide the other physical services, necessary to the success of Medicare.

The Liberal Government, who have always been the warm friends and champions of education and health for all the people, regard this task as almost a sacred trust, and no effort or expense will be spared to give the men, women and children of this Province the best health services that science and money can provide.

### 2

The Department of Health, whose work since Confederation, and before, has been a noble contribution to Newfoundland's welfare, will have to be greatly re-organized in the great new programme at hand.

### 3

The recommendations of the Right Hon. Lord Brain will be carried out in almost every particular.

### 4

The Government, with the help of the Government of Canada, will provide the money to enable Memorial University to give Newfoundland two magnificent Medical Colleges—a Post-graduate College and the Graduate College.

They will be the means of giving Newfoundland and Labrador a vastly increased number of doctors, dentists, and other types of skilled medical personnel. This purpose will be greatly helped by the Liberal Government's free tuition and salaries for students at our Newfoundland University.

### 5

We will provide some 1,600 to 1,700 new hospital beds, and at the same time replace 500 to 600 existing beds that are below standard. The provision of these 2,200 or 2,300 new hospital beds will meet most of the demand arising in the next few years. These beds should be distributed approximately as follows:

St. John's area . . . . .	750
Corner Brook area . . . . .	250
Central Newfoundland . . . . .	200
Twillingate . . . . .	50
Conception Bay . . . . .	100
Burin Peninsula . . . . .	75
Harbour Breton—	
St. Albans area . . . . .	75
Come-by-Chance—	
Clarenville area . . . . .	150
St. Barbe Peninsula . . . . .	50
St. Anthony . . . . .	150
White Bay area . . . . .	75

Convalescence beds:

St. John's . . . . .	200
Corner Brook area . . . . .	75
Central Newfoundland . . . . .	75

The larger hospitals in the Province will be made into regional institutions, with increased professional and non-professional staff, and increased facilities for modern medical work.

The larger regional hospitals will all have psychiatric units of 25 to 30 beds, and in St. John's will have to have another 400 psychiatric beds, including a maximum-security unit of 150 beds.

### 6

We will establish a Rehabilitation Centre for Adults of about 50 beds, and this will have also a fully equipped out-patient department to take care of at least 75 patients at a time.

### 7

We will build two or possibly three new nursing schools. These will probably be established at St. John's, in Central Newfoundland, and in Western Newfoundland.

In these new schools, which would not be connected with hospitals, intensive theoretical instruction would be given to nursing students. These students would afterwards get their practical training in the hospitals.

These schools would be capable of training 300 to 400 nurses.

As it becomes more difficult to get medical doctors to go and stay in the more isolated and remote parts of our Province, it will become very necessary to have fully trained nurses

to go to such areas. These nurses, with their special training and qualifications, will be stationed in considerable quantities in a number of centres in the Province. Examples of these centres are as follows:

Rencontre West  
Green Bay  
King's Cove  
Placentia Bay  
St. Barbe North  
Trinity North  
Daniel's Harbour  
Seldom-Come-By  
Hare Bay  
Fortune Bay  
Notre Dame Bay  
Random Island

These places are given merely as examples, and at least double this number will have to be included.

### 8

We will build between 50 and 100 residences for medical doctors, and it will be necessary also to provide suitable homes for about 300 other doctors.

### 9

We will build for Placentia Bay a fine new hospital ship to give the people of that Bay a far better service than they have ever had. At Placentia we will build two or three new residences for medical doctors, and these doctors will take turns travelling on the boat and working in the hospital, so as to make the life more attractive for doctors and thereby hold them for longer periods in this important work.

Another fine new hospital ship will be built for the South West Coast, and it will operate from the harbour containing the new hospital, somewhere in Hermitage or Fortune Bays. Similarly new residences will be built here for medical doctors, and they will follow the same practice as Placentia. In this way we expect to be able to attract doctors more readily and to keep them at this work for much longer periods of time. All of this will mean far better service for the people.

### 10

We will establish at St. John's, Grand Falls, Corner Brook, Grand Bank, Happy Valley and in Western Labrador, full-fledged Public Health Institutions. These will be fully staffed to deal with such public health matters as sanitation, pure water, food inspection, and many others. The present staff of 25 Health Inspectors must be more than doubled.

### 11

We will launch a determined campaign to obtain and establish around the Province at least 200 dentists.

These will be put on Government salary, and they will be helped to get suitable homes and other facilities to encourage them to go and remain in towns away from the Capital City.

The dental service in our schools will then be greatly increased, for it is our plan to give every school child the advantage of this great service.

At least five fully-equipped mobile dental units will be provided, and they will travel to the more isolated and remote settlements to bring this service to the children in them.

Here is the  
foundation  
we have built



**Since Confederation  
(and the Liberal  
Government) came, we  
Newfoundlanders have  
been building new  
highroads to a better  
life - 2300 miles of them**

2,300 miles of new roads built.

---

2,000 miles of roads rebuilt.

---

1,000 miles of roads paved.

---

580 settlements taken out of their isolation, and connected up by road to each other and to the Province's road system.

---

198 important new bridges have been built.

---

The most important new bridges built are:

Deer Lake Bridge  
Robinson's River Bridge  
Gambo River Bridge  
E. S. Spencer Bridge  
Sir Robert Bond Bridge  
Crabbes River Bridge  
Queen Elizabeth Bridge  
Grand Bay Bridge  
Ballam Bridge  
Romaine's Brook Bridge  
Portland Creek Bridge  
Canning Bridge  
Sir Ambrose Shea Bridge  
F. W. Rowe Bridge  
Pinware River Bridge  
Holyrood Pond Bridge  
Dildo Run Bridge  
Curtis Causeway  
Hefferton Causeway  
Castor's River Bridge  
Mouth of Gander River Bridge

---

Over eighty great new roads have been built since the Liberal Government came in power. The most important of these new roads are:

Trans-Canada Highway (565 miles)  
St. Barbe Highway (228 miles)  
Baie Verte Highway (50 miles)  
Jacksons Arm Road (45 miles)

## HIGHWAYS

La Scie Road (33 miles)  
 Rose Blanche Road (28 miles)  
 Lark Harbour Highway (36 miles)  
 Cox's Cove Highway (23 miles)  
 Trout River Road (12 miles)  
 Burlington Road (12 miles)  
 Pilley's Island Road (20 miles)  
 Roddickton Highway (60 miles)  
 Buchans Highway (44 miles)  
 Road to the Isles (56 miles)  
 Gander Bay Road (26 miles)  
 Straight Shore Road (71 miles)  
 Bonavista North Highway (60 miles)  
 Terra Nova Road (12 miles)  
 Musgrave Town-Port Blandford Highway (20 miles)  
 Queen's Cove Road (20 miles)  
 North Harbour-St. Mary's Road (9 miles)  
 Bay d'Espoir Road (95 miles)  
 Harbour Breton Road (40 miles)  
 Strait of Belle Isle Highway (50 miles)  
 Happy Valley-N. W. River Road (20 miles)

The Government have paved the main street through 71 of the larger towns of the Province:

Port aux Basques  
 Channel  
 Grand Bay  
 Mouse Island  
 Shallop Cove  
 St. George's  
 Stephenville  
 Stephenville Crossing  
 Romaine's  
 Port au Port  
 Kippens  
 Campbell's Creek  
 Abraham's Cove  
 Corner Brook

Deer Lake  
 Baie Verte  
 Springdale  
 Buchans  
 Grand Falls  
 Windsor  
 Bishop's Falls  
 Botwood  
 Northern Arm  
 Lewisporte  
 Embree  
 Gander  
 Gambo  
 Dark Cove  
 Middle Brook  
 Glovertown  
 Traytown  
 Clarenville  
 Bonavista  
 Catalina  
 Port Union  
 Grand Bank  
 Fortune  
 Placentia  
 Dunville  
 Jersey'side  
 Freshwater  
 St. Philips  
 Pouch Cove  
 Torbay  
 Logy Bay  
 Outer Cove  
 Middle Cove  
 Portugal Cove  
 Mount Pearl  
 Happy Valley  
 Labrador City  
 Wabush  
 Islington  
 Heart's Delight  
 Heart's Desire  
 Heart's Content  
 New Perlican

Winterton  
 Whitbourne  
 Dildo  
 Blaketown  
 Blackhead, C.B.  
 Broad Cove  
 Kingston  
 Salmon Cove  
 Victoria  
 Carbonear  
 Bay Roberts  
 Brigus  
 Goulds  
 Bay Bulls  
 Kilbride

---

Islands connected to Mainland:  
 Allan's Island to Lamaline  
 Random Island to Shoal Harbour  
 Pilley's Island to Robert's Arm  
 Triton Island to Pilley's Island  
 Small's Island to Burgeo  
 Cull's Island to Traytown.

---

The first railroad overpasses built in Newfoundland.

---

First motor traffic lights installed in Newfoundland.

---

### FERRIES

Placentia Ferry (replaced)  
 Holyrood Pond Ferry (replaced)  
 Fogo Island Ferry  
 Bonne Bay Ferry  
 Newfoundland-Labrador Ferry  
 Burgeo Ferry  
 Twillingate Ferry

---

Miles of roads snow plowed in the winter increased from 240 miles in 1949 to 4,500 miles in 1966; from \$70,000 spent on snow clearing in 1949 to \$2,500,000 spent on snow clearing in 1966.

## HIGHWAYS

Here is the  
Liberal Blueprint  
for the future

## 3,000 miles of paving in the Liberal program for the coming years

**1**

We will pave 3,000 miles of roads in Newfoundland and Labrador.

We will pave the main street or road through all the settlements in the Province except for the very smallest places.

**2**

We will build a causeway to connect Twillingate Island, and all the settlements and people of Twillingate Island, with the Road to the Isles, thus doing away with the need for a ferry. We will carry out a strong and determined programme of improving and upgrading all of the main roads of the Province, with the purpose of paving most of them in the course of time.

**3**

We will double the present annual grant to the Road Boards, Community Councils and Town Councils, which will greatly assist them to improve the condition of the streets and roads in their communities.

**4**

We will build on the Island of Newfoundland, and in Labrador, 1,000 miles of new roads. This mileage will be over and above the roads that we are presently committed to build, and will, when completed, leave this

Province with hardly any need for more ordinary roads and highways. Certain special roads will still have to be built to reach this mine or that factory or some mill or plant that will be erected as part of our Economic Development Programme.

**5**

We will build a great highway, from Forteau on the Strait of Belle Isle, to Happy Valley and Goose Airport, in Lake Melville, on to a point near Churchill Falls, and thence to the City of Wabush and Labrador City.

This road will be connected to the Newfoundland network of highways by a tunnel underneath the Strait of Belle Isle to connect Newfoundland and Labrador. We will, of course, try to get very substantial help from the Government of Canada to build a road and tunnel.

This great road will be built to Trans-Canada Highway standard, and will be paved for its full length. It will open up one of the greatest store houses of natural wealth now remaining in North America. This will bring about very great development of these resources, and will create thousands of new jobs and bring millions of dollars of new revenue into the Treasury of the Province.

It will be our policy to spend increasingly large amounts of money to bring improvements of many kinds to the people of Labrador.

**6**

The highroad that we have already started in the Strait of Belle Isle will

be carried northward along the coast of Labrador to Sandwich Bay, where great logging developments will take place. This great new highway will open up vast new territories in Labrador, will link up the settlements along the coastline, and will bring great advantages to the people who live out on the coast in that part of Labrador.

Numerous other roads will need to be built in Labrador, especially in the Lake Melville section and northward along the coast from there; and it is our intention to use a large part of the revenue received from Labrador development to pay the cost of building and maintaining these new roads.

**7**

Our programme of building strong new concrete and steel bridges, and doing away with small wooden bridges that have now lived their time, will be pushed forward vigorously until the whole Province is served by modern bridges.

## INDUSTRIES

Here is the  
foundation  
we have built

## New industries, new mines, new jobs, better wages are the foundation of economic development

The Liberal Government, by providing all or a large part of the capital required, have brought to Newfoundland the following new enterprises:

The Cement-Making Industry  
The Gypsum Building-Board Industry  
The Plywood Industry  
The Fibrply (particle-board) Industry  
The Woollen-Wear Industry  
The Cotton Garment Industry  
The Shoe Industry  
The Steel Industry  
The Oil Refining Industry  
The Steel Shipbuilding Industry  
Octagon Machine Plant  
Anhydrous Ammonia Industry  
(Come-by-Chance)  
The Phosphorous Industry  
(Long Harbour)  
The Third Pulp & Paper Mill  
(Come-by-Chance)  
The Pyropholite Industry (Manuels)

### Industries Restored:

Brick  
Asphalt  
Creosoting

In all of the industries mentioned above, and including the fish plants mentioned elsewhere in this document, the grand total sum of money invested or loaned by the Government was \$55,000,000. These industries have already paid out, in wages and salaries, in local purchases, and in local trucking and other freights, a grand total sum of \$244,000,000.

More than 19,000 persons are directly or indirectly employed in these industries, whole or part time, including fishermen, and they earn about \$38,000,000 a year. They and their dependents would number about 95,000 persons. Many of these workers earn other income from other sources.

New mines have been brought into being either entirely or very largely by the Liberal Government at:

Labrador City  
City of Wabush  
Tilt Cove  
Little Bay  
Rambler I  
Rambler II  
Baie Verte  
Whalesback  
Great Gull Lake  
York Harbour

(A large number of modern fish plants might be inserted at this point, but they already appear elsewhere in this document under the heading Fisheries.)

The Government, through the St. John's Housing Corporation, established the new industrial and commercial park at the junction of Kenmount and Thorburn Roads which now contains twenty-nine separate industrial and commercial enterprises that have established themselves there. Many others will do so in the near future.

The Government started the greatest programme of geological and mineral surveys in our history.

The Government, in Notre Dame Bay, conducted the largest air-borne

magnetometer survey ever conducted in the world up to that time. As a direct result of that famous survey, which cost the Government one quarter of a million dollars, seven new mines have come into operation. The Government have conducted some extremely large and important forest surveys, and appointed a Royal Commission on Forestry.

The Government are presently conducting the largest forest survey in our history, with the Canadian Government helping substantially to pay the cost of it.

It should not be forgotten that one of the greatest things done to promote Economic Development was the road construction programme.

Jamaica Marine freight subsidy on goods passing between Newfoundland and Jamaica.

The passing of the Undeveloped Mineral Lands Act.

Creation of BRINCO (British Newfoundland Corporation).

\$250,000 spent around the world to advertise low-cost electric power for sale, to attract industries to this Province.

Here is the  
Liberal Blueprint  
for the future

**Bigger industries and  
cheap power will turn  
expansion into a boom**



**1**

We will continue our drive for new industries.

**2**

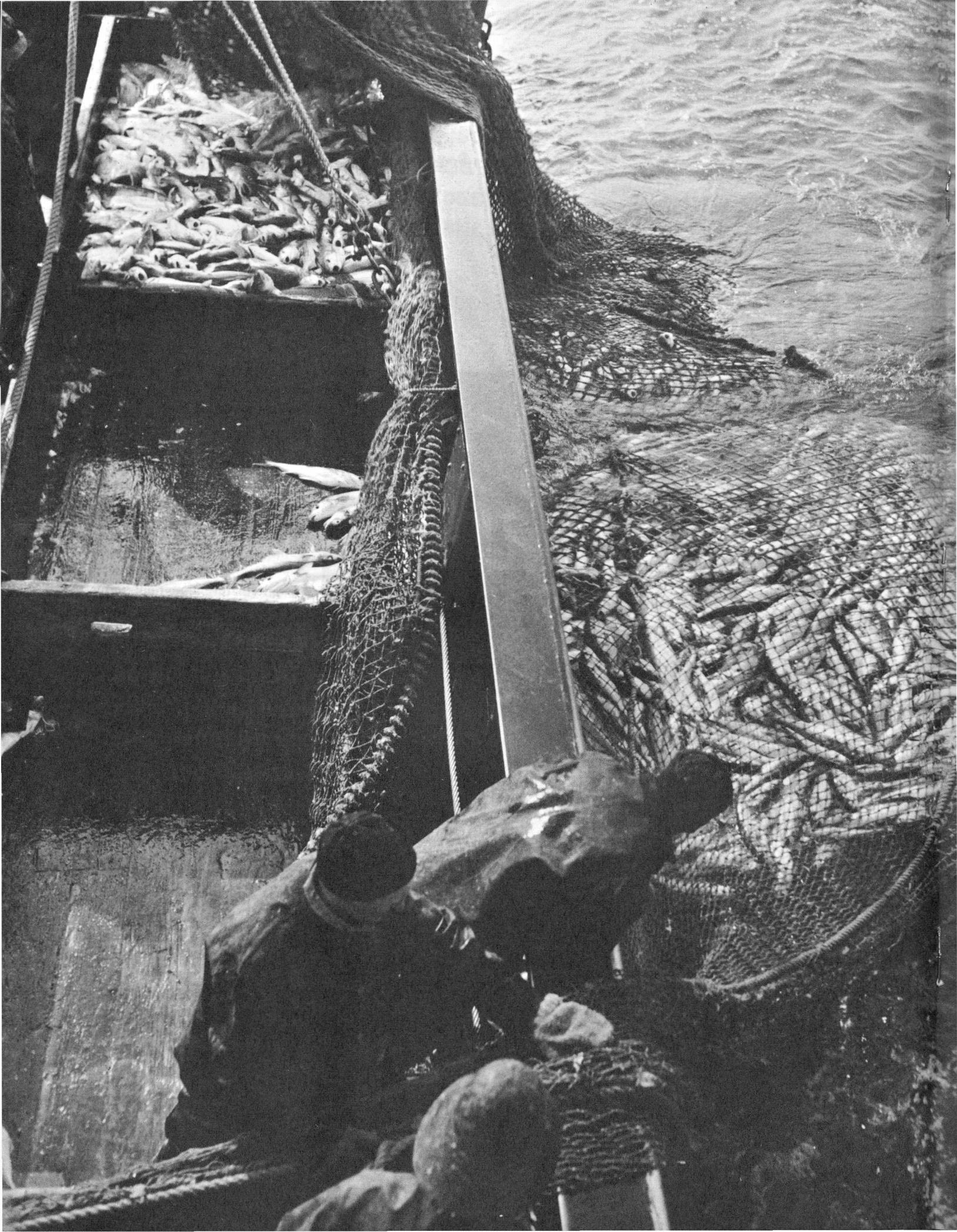
We will bring very large blocks of low-cost electric power to the Island of Newfoundland, and use it to attract new industries to the Province.

Among these will be industries to manufacture aluminum, industrial chemicals, chemical fertilizers, etc.

The starting of such industries, employing many hundreds of men, will result in secondary manufacturing industries using the products of those large industries as the raw material of their own production.

**3**

The discovery of new mines, coupled to low-cost electric power, will make the smelting and refining of minerals practical and profitable, and the Government will drive toward that purpose.





## FISHERIES

Here is the  
foundation  
we have built

**Government has  
financed many new  
fish plants and  
2,587 fishing boats**

Fish plants (fresh or salted),  
community stages, etc. provided at:

Quirpon  
Canada Harbour  
Twillingate  
Greenspond  
Bonavista  
Heart's Desire  
Harbour Grace  
St. John's  
Witless Bay  
Ferryland  
Branch  
Merasheen  
Harbour Buffett  
Peterview  
Lawn  
Grand Bank (2)  
Harbour Breton  
Ramea  
Rose Blanche  
Quigley's Cove  
Reef's Harbour  
St. Anthony  
LaScie  
Seldom-Come-By  
Salvage  
Catalina (2)  
Dildo  
Bay Roberts  
Quidi Vidi  
Cape Broyle  
Trepassey  
St. Bride's  
Port Elizabeth  
Marystown  
Burin  
Fortune  
Gaultois  
Burgeo  
Isle aux Morts  
Curling  
Lourdes

Danish-seining introduced to  
Newfoundland.

---

Long-lining introduced to  
Newfoundland.

---

257 fishing vessels financed by the  
Government.

---

2,330 inshore fishing boats financed  
by the Government.

---

39,000 nylon nets mainly financed by  
the Government.

---

48,000 longlines mainly financed by  
the Government.

---

Lobster pot losses largely financed by  
the Government.

---

Fishing property losses largely paid  
by the Government.

---

Bonus on price of fish, 1952.

---

Launching the Fishery Development  
Programme.

---

In the past three years the Govern-  
ment have spent \$1,000,000 for  
bounties on 115 fishing vessels  
of over 35 feet; half a million dollars on  
smaller fishing boats; over \$1,000,000  
in bounties on nets and trawl-lines.  
These bounties helped our fishermen  
to get over 2,000 skiffs and 36,000  
gill-nets and 8,500 trawl lines.

## FISHERIES

Here is the  
Liberal Blueprint  
for the future

## Fisheries Industry will modernize and expand to double its present size

**1**

We will build the fisheries into a great industry at least double their present size and value.

**2**

The number of settlements in the Province will fall from about 1,100 to about 500. About 400 of these will get most of their living from the fisheries.

**3**

200 fishermen's wharves will be built.

**4**

Between 300 and 400 modern fishing boats, running from 10 tons to 60 tons, will be provided, and these will allow the fishery to be carried on for at least 8 months every year. Fishermen working for 8 months will earn more money than plant workers employed for the whole year. The total number of fishermen will run to about 15,000 men but each fisherman will earn between \$5,000 and \$6,000 a year.

**5**

Fish will be produced inshore by gill nets, longlines, drag nets, and cod seines.

**6**

Electrical, electronic and suction pump devices will be used to catch fish.

**7**

Production of species such as shrimp, lobster, salmon, scallops, clams and Greenland halibut will be encouraged and will add greatly to the value of the fishery.

**8**

New interest will be taken in the great schools of caplin in our waters, but many caplin will be taken long before they reach the shore, and long after they have left the shore, by modern means of catching.

**9**

Herring and mackerel will be taken in very large quantities, both inshore and offshore, in modern types of boats with very modern kinds of fishing gear. The herring and mackerel fishery will perhaps give the fishermen more money than cod fish will give.

**10**

Not nearly so much cod fish will be salted in the years ahead, for the demand from frozen fish plants will be so great that few fishermen will be willing to salt their fish.

**11**

The deep-sea fishery will be of very great size. About 200 draggers and trawlers, each measuring about 500 gross tons, will be engaged in the deep-sea fishery.

**12**

The catches will be smaller, but price will be much higher, and fishermen will have good earnings and be able to support themselves far better than anything ever known in the past.

**13**

When all the different species of fish are taken into account it is likely that the total annual catch of fish in Newfoundland will go to Two thousand million pounds (2,000,000,000 lbs.) a year within the next few years. Processing this enormous quantity of fish will keep the fish plants busy all the year round.

These fish plants will have many new ways of processing the fish.

**14**

Very great quantities of fish meal will be produced in this Province, and this meal will not be fed only to animals and poultry, but large quantities of it will be used to supplement food for the teeming millions of people in Africa, Asia, and other parts of the world where protein foods are scarce and expensive. Ships will be catching fish for these fish meal plants, and in many cases the whole fish will be used to produce fish meal, not merely the offal as now.

### 15

Large quantities of fish will be shipped away from Newfoundland, in the fresh form, in great cargo airplanes, and most of this fish will be on the way to the markets within a day or so after being taken out of the water.

### 16

Men working on modern draggers will be highly trained and skilled, and will command high wages. Accommodation on board the ships will be as good as can be found in the average hotel. Food will be as good as can be found in most hotels. Men will be employed all the year round in these ships, but they will miss every third or second voyage of the ship by staying ashore under wages. There will be at least three crews, if not four, for every two ships.

### 17

As the world's population increases, and the demand for fish goes up, the price of fish will advance, the demand for men on the draggers will become very strong, and the dragger crews will be among the best paid workers in the Province.

Workers in and around the fish plants will also be among the best paid workers in the Province.

Inshore fishermen bringing fish to these fish plants will be better paid than was ever dreamed of in the past.

### 18

All fishing boats and ships of 60 tons or more, or even much smaller, will be built of steel. They will be much stronger and much more dependable than wooden boats or vessels. They will all be built in Newfoundland shipyards.

### 19

Many more people will depend, directly or indirectly, on the fishery for their living. At least 150,000 people will get a good living out of the fishery, and the fishery will rapidly become a highly respected and profitable industry for all engaged in it. Young men coming out of Technical College or the University will be attracted to the fishing industry in one way or another. Some will work in fish plants, some on board the large draggers, and some will earn an independent living of high standard by operating their own smaller boats.

Earnings in the fishing industry in Newfoundland will run to over Two Hundred Million dollars a year within the next few years.

### 20

The College of Fisheries, Navigation, Marine Engineering and Electronics will grow very fast until it is three to four times as large as it is today. Many thousands of young Newfoundlanders will go through it, and young fishermen will come to it from many parts of the world. Important scientific research will be carried on by it. The College's fame

will spread throughout the fishing industry of the world.

### 21

Large sums of money will be advanced to qualified fishermen to help them build modern boats, to buy modern engines and fishing gear, and otherwise acquire the tools of their trade. A large part of this money will come from the Government of Canada, but it will be handled by the Fisheries Loan Board of the Newfoundland Government. Every practical help and encouragement will be given to fishermen to help them build up a strong and prosperous fishery, and to make a good living in the industry.

Fishing towns will be as modern and up-to-date as any towns in the Province. They will all have electric light, water and sewerage, paved streets, good schools, health services, and all modern municipal services.

Newfoundland will be the greatest, most modern, and most prosperous fishing area of the New World.

## AGRICULTURE AND RESOURCES

Here is the  
foundation  
we have built

### **New farmland, new parks, better forest management are Liberal achievements**

---

14,300 acres of land newly cleared.

---

1800 acres of old farmland improved.

---

38 miles of farm roads built.

---

3,200 acres of bogland drained.

---

1,330 acres of bogland rotovated.

---

1,160 acres of bogland seeded.

---

65,000 acres of blueberry lands burned.

---

420 miles of blueberry roads and trails built.

---

All cattle in Newfoundland tested for Bovine T.B.

---

Bovine T.B. wiped out in Newfoundland.

---

All animals discovered to have T.B. were purchased by the Government and destroyed.

---

90% of all cattle in Newfoundland tested for Brucellosis.

---

292 Sheep Fairs held.

---

141 Farm Exhibitions held.

---

Many thousands of dollars paid out in prizes at Fairs and Exhibitions.

---

Poultry industry built up.

---

Mink industry established and built up.

---

Hog-breeding industry established and many farmers helped to raise hogs.

---

Abattoir established at Fort Pepperrell.

---

Poultry processing plant established at Fort Pepperrell.

---

Community pasture programme established.

---

Agricultural Limestone Policy, under which farmers are supplied with limestone at a fraction of its real cost.

---

Small agricultural warehouses established.

---

Many hundreds of pure-bred animals brought in and distributed among farmers.

---

Newfoundland's first poultry and animal feed mill established.

---

15,000 acres of mineral soil fenced and improved for community pastures.

---

750 acres of bogland fenced and developed for community pastures.

---

Warehouses and cold storages built at:

- Codroy Valley
- Dildo
- Pepperrell

---

Provincial Parks Built:

- John T. Cheeseman Park
- Barachois Pond Park
- Squires Memorial Park
- Notre Dame Park
- Bellevue Beach Park
- Gushue's Pond Park
- Butterpot Park
- Catermaran Park
- Crabbe's River Park
- Blue Pond Park
- Baie Verte Park
- Indian River Park
- Aspen Brook Park

---

Glenwood Park

---

Square Pond Park

---

Cochrane Pond Park

---

Piccadilly Beach Park

---

River of Ponds Park

---

Sop's Arm River Park

---

Rushy Pond Park

---

Joniton's Pond Park

---

Windmill Bight Park

---

Middle Brook Falls Park

---

Lockston Pond Park

---

La Manche Park

---

Northern Bay Sands Park

---

Grand Codroy Park

---

Dildo Run Park

---

Frenchmen's Cove Park

---

Provincial Parks Approved:

- Burnt Island River Park
- Red Indian Lake Park
- Cape St. John Park
- Argentia Road Park
- Duder's Lake Park
- Happy Valley Park
- Flat Water Pond Park

---

35 forest management areas laid out, with 3,000 square miles.

---

650 square miles of timber lands in Newfoundland, and 4100 square miles of timber lands in Labrador, recovered for the public.

---

Horwood Lumber Company timber limits purchased by the Government.

---

Inventory of Crown Lands Forest in Newfoundland completed in 1959.

---

Two-year pre-forestry course started

## AGRICULTURE AND RESOURCES

at Memorial University in 1956.

\$30,000 spent to assist thirty-five forestry students to attend University.

Two-year Forestry Technology Course established at the College of Trades and Technology.

Forestry Division increased from 31 permanent employees and 48 seasonal employees to 121 permanent and 111 seasonal employees.

126 Miles of Forest Access Roads have been built.

In 1966 the Newfoundland and Canadian Governments started a joint \$5,000,000 forest inventory of Newfoundland and Labrador.

Forest-fire equipment increased as follows:

	1949	1966
Depots.....	10	28
Towers.....	8	22
Trucks.....	7	34
Air Craft.....	0	10
Radio Stations.....	0	125
Power Pumps.....	33	166
Hand Pumps.....	481	1,179
Fire Hose (ft.)....	77,000	370,200

The Government, with their diamond drills, have drilled mineral deposits in many parts of the Province to a total of about 200,000 feet or almost 40 miles.

When the Government came in power, Newfoundland had a herd of less than 5,000 caribou. By careful management the Government have brought the total to more than 10,000 animals today, and the number is increasing rapidly.

The Government introduced ruffed

grouse to Newfoundland in 1956 and to this date just over 500 grouse have been released at eleven places across the Island. We now have more than 2,000 square miles populated, and the grouse population is increasing rapidly.

The Government, in 1964, released 134 Labrador spruce grouse at Butterpot Park, Gander Lake and Little Gander Lake.

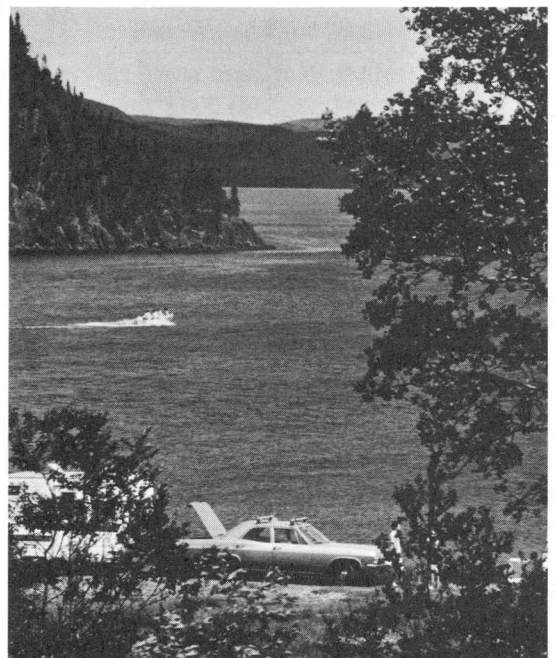
The Government, in 1964, introduced buffalo to the Province. The small herd has not thrived, but the Government are determined to make a success of the experiment.

Some 413 land surveys have been carried out by the Government.

Ten summer-cottage development areas were laid out in various sections of the Province.

All of the items mentioned in this section, when added up, come to less than 10% of the projects carried out in this one Department.

## AGRICULTURE AND RESOURCES



## AGRICULTURE AND RESOURCES

Here is the  
Liberal Blueprint  
for the future

**Liberals  
offer new camps,  
new parks,  
better farming**

**1**

We will choose, survey carefully, plan and lay out a large number of summer-cottage sites near suitable lakes, within suitable distance of such places as St. John's, Placentia, Harbour Grace, Carbonear, Clarenville, Trinity, Bonavista, Wesleyville, Gambo, Gander, Lewisporte, Grand Falls, Botwood, Bishop's Falls, Windsor, Buchans, Deer Lake, Bonne Bay, Corner Brook, Stephenville, St. George's, Robinson's, Codroy Valley, Port aux Basques, Fortune, Grand Bank, Marystown and others too numerous to mention.

Roads and paths will be built through these areas, with careful provision against pollution of the ponds, and building-lots and sites of varying sizes will be made available to the public at cost. We consider this to be necessary to put an end to indiscriminate squatting around the country, with its consequent danger of polluting the waters and spoiling the scenery of our country areas.

**2**

We will increase considerably the number of camp-sites throughout the Province, and the camp-sites that already exist will be improved to high standards of convenience and comfort for campers.

**3**

We will increase considerably the number of Provincial Parks

throughout the Province, and the best ideas that we can find across Canada and in other lands will be brought into use to make these parks attractive to our own people and to our visitors as well.

**4**

A special effort will be made to provide suitable and comfortable trailer parks, where house trailers can be accommodated with pure water, electricity and toilet facilities.

**5**

We will seek to introduce into the Province other kinds of wild birds and game animals with a view to improving the sporting attractions and food resources of the people.

**6**

The Government will establish four large controlled-temperature warehouses in which farmers, beef and pork raisers, fishermen, and other primary producers will have thoroughly modern cold storage facilities made available to them at low cost. Commercial firms will also be able to rent space in these buildings for the holding of fresh fruit. The buildings will be erected at:

Holyrood  
Central Newfoundland  
Western Newfoundland  
Burin Peninsula

Careful studies will be made to determine exactly where the buildings will be erected in Central and Western Newfoundland.

**7**

We will commence a greatly intensified programme of land clearing.

**8**

We will step up our programme of bogland reclamation.

**9**

We will commence a great programme of afforestation and reforestation, with a view to bringing one million additional acres into forest production.

**10**

We will offer the Government's active services to the farmers, pork and meat producers, poultry and egg producers, and others, in the formation and successful operation of strong co-operative marketing organizations.

## PUBLIC WELFARE

Here is the  
foundation  
we have built

## Not one person left out in expanding welfare services

---

Creation of the Department  
of Public Welfare.

---

Set up a system of mothers'  
allowances for widows and all  
families where the head of a family  
was unable to work.

---

Creation of a Division of Labrador  
Affairs in order to give special care  
and attention to our Eskimo and  
Indian citizens who live in Northern  
Labrador. We arranged to provide  
homes for Eskimos and Indians.

---

Set up a system of Dependents'  
Allowances for all persons unable  
to work because of illness.

---

Assumed responsibility for orphans  
and for neglected children.

---

Established in 1955 a *comprehensive*  
programme of social assistance  
for all needy persons, and increased  
the rates substantially in 1958,  
1962 and 1966.

---

Set up a system of foster homes  
to care for neglected children and  
other children whose parents were  
unable to look after them.

---

Built a home and training school  
for boys at Whitbourne.

---

Arranged for the care of unmarried  
mothers and accepted responsibility  
for the care of those children born  
out of wedlock where the parents  
of such children were not in a position  
to care for them.

---

Took responsibility for the  
education and training of all blind  
and deaf children of Newfoundland.

---

We converted the former Merchant  
Navy Hospital into a home for very

---

seriously handicapped children.

---

We have established our own  
School for the Deaf, thus doing  
away with the need for deaf children  
to go out of the Province for  
education and training.

---

We established a Home and Training  
School for delinquent girls.

---

With the co-operation of the  
University, we established a 4-year  
training programme for persons  
wishing to become Welfare Officers  
and Social Workers.

---

In co-operation with the Government  
of Canada we have had allowances  
to needy blind and disabled persons  
as well as to those between the ages  
of 65 and 69.

---

We have paid the travelling costs  
of all needy sick persons who have  
to go to hospitals away from  
their homes.

---

We have provided special help  
wherever there have been disasters.

---

In 1951 we established the first  
Family Court in Newfoundland  
to help deal with family problems.

---

We created a system of boarding  
home care for the aged and infirm  
who could not be looked after  
in the Infirmary.

---

We built a new Home for the Aged  
and Infirm (Hoyles Home) which is  
considered to be one of the best  
of its kind in North America.

---

We created a Regional Welfare  
Officer system so that our people

---

could have welfare attention no  
matter where they lived.

---

We trained scores of Welfare Officers  
and in many cases sent them for  
training to Schools of Social Work  
in other parts of Canada to enable  
them to serve the people of  
Newfoundland better.

---

We have helped to repair homes or  
built new homes for hundreds  
of widows and other families where  
the head of the family was unable  
to work.

---

Appointed a Royal Commission  
on minimum wages.

---

We created the Department of Labour;  
the Workmen's Compensation  
Board; the Apprentice Training Plan;  
the Labour Relations Board.  
We created many Conciliation Boards  
in labour disputes, and made 229  
successful and satisfactory  
settlements of such disputes. We  
created the system of boiler and  
pressure vessel inspection. We paid out,  
through the Workmen's Compensation  
Board, over Twenty-three Million  
dollars in 143,418 accident cases.  
We gave financial help in the  
building of St. Patrick's Mercy Home,  
in the building of St. Luke's Home  
for Aged Persons, for the Agnes  
Pratt Home for the Aged. We  
provided important financial help  
to put skating and hockey rinks in:

St. John's  
Harbour Grace  
Bonavista  
Gander  
St. Anthony  
Happy Valley  
Corner Brook



## PUBLIC WELFARE

Here is the  
Liberal Blueprint  
for the future

### Children and Old Folks benefit from Liberal blueprint for the better life

1

We will erect, equip, and operate a large new institution for the care of special cases of seriously handicapped children who, because of the seriousness of their affliction, are too great a burden for their parents and families. We believe that such an institution will be one of the most useful ever built in this Province.

2

We will build a new School for the Deaf to replace the temporary facilities that we now have at Torbay Airport. It will have ample dormitory accommodation for all deaf children who are in need of special training and will become the centre for services to deaf children in all parts of the Province.

3

Hoyles Home and St. Patrick's, St. Luke's and Agnes Pratt Homes for the Aged are splendid places, but they are all in the City of St. John's. We will give financial assistance for the establishment of similar homes in Central and Western Newfoundland if responsible bodies make the decision to establish them.

4

We will give financial help to provide new skating and hockey rinks in various parts of the Province, over and above those which we have already helped to establish. Money will be available from the Liberal Government to help in the provision of such buildings at such places as:

Placentia  
Grand Bank  
Stephenville  
Lewisporte  
Marystown  
Baie Verte  
Springdale  
Deer Lake  
Burin  
Fortune  
Carbonear

and other large settlements on the Island and in Labrador where local organizations are willing to take the lead in building such rinks.

5

The Government will increase the monthly payments to orphans, widows, sick and helpless heads of families (Social Assistance) according as the Government of Canada reduces the Old Age Pension age limits down to 65. In the coming year the Government of Canada will pay half a million dollars Old Age Assistance that the Newfoundland Government have had to pay up to now. In the year after that the Canadian Government will pay out one million dollars for that purpose, and in the year after that again one-and-a-half million dollars, and in the fourth year two million dollars. As the Newfoundland Government are relieved of this burden, we will give these amounts saved to the widows and their children, and other dependent families whose breadwinners are not able to work or earn.

6

We shall establish a new and large house and training school for delinquent boys to supplement or take the place of the existing one at Whitbourne.

## AIRPORTS, AIR STRIPS, LABRADOR ROADS

Here is the  
Liberal Blueprint  
for the future

### Air link to Labrador, new Labrador highway vital to Newfoundland's future

We gave Eastern Provincial Airways, on loan, about Six Million dollars, so that they could buy more aircraft, buy out Maritime Central Airways, and become a strong and successful Newfoundland airline.

Our chief reason for doing so was to make sure that there would be a good connection between Newfoundland and Labrador, and between Labrador and Newfoundland.

This was one of the wisest amounts that any Government ever spent in Newfoundland, or ever will spend.

It is possible that Labrador might be lost (economically) to us if we had not taken this bold step.

Since then we have volunteered to pay one-quarter of all the airplane passenger fares between the two great parts of our Province. We will, as time goes on, introduce other reforms and improvements to help on the good work of keeping Labrador and Newfoundland together as two great parts of a great Province.

We will build one of the great highways of Canada, stretching from St. John's to Labrador City and City of Wabush, and connecting with Happy Valley, Goose Airport, Twin Falls and Churchill Falls.

This great highway, which will cost more than One Hundred Million dollars to build and pave, will have to receive strong financial support from the Government of Canada.

This great highway, which will open up vast natural resources in Labrador, must not end at Forteau. It must be made possible

to drive easily across the Strait of Belle Isle, and this can only be done if a great causeway is built across the Strait or else a tunnel placed underneath the sea-bottom. It is this tunnel that we favour, and that we will build. Again, great help will have to come from Ottawa in the building of it. The transmission lines bringing power to Newfoundland from Churchill Falls, and from other great power developments that will be started in Labrador, can pass through this same tunnel, and share in the cost of it.

Our possession of great airports at St. John's, Gander, Stephenville and Goose make it possible, in this great air age, almost literally to destroy the distance that now separates this Province from Upper Canada or the great industrial population in the heartland of this Country. A tremendous increase has taken place in the number and weight of cargos being flown into Newfoundland from Mainland Canada, and this traffic is increasing every week. The aircraft go back practically empty and this should give us a great opportunity to develop sales of Newfoundland products on the Mainland of Canada and wipe out much of the disadvantage under which Newfoundland has laboured down through the years. It will be the policy of the Government to pursue this matter vigorously and if we can succeed in this matter it should remove one of the main difficulties in the way of developing light industries

in this Province. But aircraft are not the only means of transportation, and our clear understanding of the importance of transportation to our Newfoundland and Labrador economy is shown by our recent appointment of a Royal Commission to examine that whole field and report to us. A Minister of the Government is Chairman of this Royal Commission, and its report, to be received in the coming weeks, will receive the most careful and sympathetic consideration of the Government.

We will, with Ottawa's help, build and equip landing-strips for aircraft at:

Burgeo  
Port aux Basques  
Trepassey  
Bonavista  
Fogo  
Twillingate  
Wesleyville  
Grand Falls  
Springdale  
Roddickton  
Bonne Bay  
Southern Labrador  
Strait of Belle Isle

and at other places as the need arises. Some of them will be paved.

## MUNICIPAL DEVELOPMENT

Here is the  
foundation  
we have built

## Running water, sewers, lights bring a better life to Newfoundlanders

---

One City Council created.

---

Forty-eight Town Councils created.

---

Sixty-nine Community Councils  
created.

---

Two Rural District Councils created.

---

Nine Local Improvement Districts  
created.

---

Water and sewer systems installed,  
with our strong help, at:

Badger  
Badger's Quay-Valleyfield  
Pool's Island  
Baie Verte  
Bishop's Falls  
Botwood  
Buchans  
Burin  
Carbonear  
Channel-Port aux Basques  
Dark Cove-Middle Brook  
Deer Lake  
Dunville  
Fortune  
Freshwater, P.B.  
Gander  
Glenwood  
Glovertown  
Grand Bank  
Hampden  
Happy Valley  
Harbour Breton  
Harbour Grace  
Jerseyside  
La Scie  
Lawn  
Lewisporte  
Mt. Pearl  
Robert's Arm  
Springdale  
Stephenville  
Stephenville Crossing

---

St. Anthony

St. Lawrence

Wabana

Wesleyville

Windsor

Winterton

Waterford Valley

---

Water systems installed with our  
strong help at:

Belleoram  
Berryhead  
Crow Head  
Daniel's Point  
Eastport  
Greenspond  
Happy Adventure  
Hawke's Bay  
Norris Point  
Pacquet  
Placentia  
Perview  
Port Kirwin  
Port Saunders  
Portugal Cove South  
Sandy Cove, B.B.  
Seal Cove, W.B.  
St. Shotts

---

Sewer systems installed with our  
help at:

Bay Roberts  
Ramea

---

Council buildings, parks and  
playgrounds installed in the  
following places with our help:  
Appleton

Badger

Badgers Quay—Valleyfield—  
Pool's Island

Baie Verte

Bay Roberts

Belloram

Bishop's Falls

Botwood

Brigus

Buchans

Burin

Carbonear

Cartwright

Catalina

Change Islands

Channel-Port aux Basques

Clareville

Corner Brook

Crow Head

Cupids

Daniel's Harbour

Dark Cove

Deer Lake

Eastport

Fogo

Fortune

Fox Harbour

Freshwater

Gander

Glenwood

Glovertown

Grand Bank

Hampden

Happy Valley

Harbour Grace

Hermitage

Howley

Isle aux Morts

Jerseyside

King's Point, G.B.

## MUNICIPAL DEVELOPMENT

La Scie  
 Lawn  
 Lewisporte  
 Main Brook  
 Marystown  
 Millertown  
 Mt. Pearl  
 Musgrave Hr.—Doting Core  
 Norris Point  
 North River  
 Northwest River  
 Pacquet  
 Pasadena-Midland  
 Peterview  
 Placentia  
 Plate Cove East  
 Point May  
 Port Saunders  
 Port Kirwin  
 Port Union  
 Ramea  
 Robert's Arm  
 Roddickton  
 Springdale  
 Stephenville  
 St. Alban's  
 St. Anthony  
 St. George's  
 St. Lawrence  
 St. Shotts  
 Triton—Jim's Cove—  
     Card's Harbour  
 Wabana  
 Wild Bight  
 Windsor  
 Winterton  
 Woody Island

### Woody Point

\$1,537,000 was advanced by the Liberal Government to these towns to help them build Council buildings and provide parks and playgrounds.

The Liberal Government, between 1949 and 1966, guaranteed debentures for the Town Councils, etc., amounting to \$23,500,000 to help them to provide their people with all kinds of Municipal conveniences and improvements.

Bank loans to these Councils that are under guarantee by the Liberal Government, at the present time, run to a total of \$18,500,000.

The Liberal Government at the present time have loaned to the Councils \$1,400,000.

Between 1949 and 1966 the Liberal Government have given special grants of \$8,000,000 to the Councils to help them to give their people better services and conveniences.

In the same period the Liberal Government have given revenue grants of \$10,000,000 to Councils.

This means that the Liberal Government, since Confederation, have provided the various Councils a total of over SIXTY-TWO Million Dollars to help them to give their people better towns and settlements in which to live.

Life has been made far more pleasant in these towns by the spending of this large sum of money that the Councils have been able to get through the Liberal Government.

The Liberal Government have provided millions of dollars to help Town Councils to pave many of their streets.

The Liberal Government have provided or helped to provide millions of dollars to build new houses. The money provided or arranged by the Liberal Government for housing has amounted to \$60,000,000 and 5,000 housing units have been built with this sum. About 26,000 people are living in homes built with this money.

Strengthened and expanded the St. John's Housing Corporation. Created the Corner Brook Housing Corporation.

Gave active help to housing programmes in Corner Brook, Grand Falls, Gander, St. John's and several other places.

Created new post of Housing Commissioner for the Province (Mr. Albert Vivian).

Co-operative Housing established in Newfoundland.

Created the Division of Rural and Urban Planning.

Created the Metropolitan Area Board of St. John's.

## MUNICIPAL DEVELOPMENT

Here is the  
Liberal Blueprint  
for the future

**More money  
will be paid to towns  
to improve and  
expand vital services**

**1**

We will push ahead in strong determination with a great programme of Municipal Development.

This will include considerable increases in the Special Revenue grants to all Councils, so that they will have more money to give their people better services and more conveniences.

Councils will be encouraged and helped to give their towns more street paving.

**2**

We will push ahead strongly to help towns to get water and sewer systems.

**3**

We will give increased grants to help Councils to provide better fire protection, street lighting, garbage and waste collection and disposal, etc., etc.

**4**

We expect that we will have to provide, or guarantee, over Sixty Million dollars to help the Councils to provide new water and sewer services.

**5**

With new towns springing up at St. Alban's, Marystown, Come-by-Chance, Long Harbour (to mention just a few), we expect that in the next few years it will be necessary to spend a total of about Ninety Million dollars to provide these

and other Municipal services and conveniences to make all of these settlements and towns the modern, pleasant places that our people will demand. Water and sewer systems alone will cost close to Sixty Million dollars, and about Ten Million dollars of this will be in the City of St. John's, and about Two Million dollars of it in the City of Corner Brook, to pay for necessary extensions to their present systems.

We know that large sums of money will have to be spent on water and sewer systems in the following places:

Bay Roberts  
Bonavista  
Brigus  
Burgio  
Catalina  
Clarenville  
Clarke's Beach  
Cupids  
Elliston  
Englee  
Fogo  
Gaultois  
Hare Bay  
Lamaline  
Little Catalina  
Marystown  
Ramea  
Roddickton  
South River  
Spaniard's Bay  
St. Alban's  
St. Anthony  
St. George's  
Twillingate  
Upper Island Cove  
Main Brook  
Cook's Harbour

Flower's Cove  
Musgrave Harbour  
Centerville  
Cow Head  
Holyrood  
Isle aux Morts  
Badger's Quay  
Baie Verte  
Jerseyside  
Fortune  
Carbonear  
Botwood  
Stephenville Crossing  
Burin  
Channel-Port aux Basques  
Gander  
Grand Bank  
Grand Falls  
Harbour Breton  
Harbour Grave  
Lewisporte  
Mt. Pearl  
Placentia  
Port Union  
Springdale  
Trepassey  
Topsail-Long Pond  
Come-by-Chance  
Arnold's Cove  
Whitbourne  
Ferryland  
Fermeuse  
Renews  
and a number of others.

**6**

We will launch a determined attack upon sub-standard housing.

We will launch a determined attack upon over-crowding.

We will launch a determined attack upon blighted areas in our

## MUNICIPAL DEVELOPMENT

larger towns and settlements.

We will make a special effort to build new homes for people of medium or modest means.

A very great part of the cost of this new housing will be found by the Government of Canada, but it is the Government of the Province that must get the work started.

In addition, the Liberal Government will provide many building lots on which people will wish to build their own homes. These building lots will be fully serviced with water and sewerage, electric lights, paved streets, curbs and gutters, paved sidewalks. Again, in this, the Government of Canada will put up most of the money.

An increasing part of this new housing programme will have to be carried on in Labrador, and of course there will have to be a very great amount of new houses built in the new towns and development centers as they spring up in the coming months and years.

7

We will greatly increase our development of Co-operative Housing, which we introduced into Newfoundland soon after the coming of Confederation.

8

Every encouragement and assistance will be given to private enterprise to provide buildings, roads and construct new homes. We believe that far more help will be provided by private enterprise than by the

two Governments combined, Federal and Provincial. We believe that in the next few years a vast sum of money will be spent by private enterprise in this way, a total getting up toward Three Hundred Million dollars in the next twelve or fifteen years.

9

We will go ahead with the following great housing programme in Newfoundland and Labrador:

### *Subsidized Housing*

Capital Investment by	
Government of Canada	\$39,000,000
Capital Investment by	
Government of	
Newfoundland.....	\$10,000,000
Capital Investment	
by others.....	3,000,000
Total Capital Cost.....	\$52,000,000
	2,500 Housing Units

### *Subsidies on Rents*

Subsidies by	
Government of Canada	\$ 8,700,000
Subsidies by	
Newfoundland and	
Municipal	
Governments.....	2,800,000
Total Subsidies.....	\$11,500,000

### *Building Lot Assembly*

Capital Investment by	
Government of Canada	\$15,000,000
Capital Investment by	
Newfoundland and	
Municipal	
Governments.....	5,000,000
Total Investment.....	\$20,000,000
	6,000 building lots

### *Co-operative Housing*

Interim loans by

### Newfoundland

Government.....	\$ 1,600,000
Total Cost.....	\$ 8,000,000
	400 housing units

### *Urban Renewal*

Canadian Government	
Investment.....	\$15,000,000
Newfoundland	
Government	
Investment.....	12,000,000
Municipal Government	
Investment.....	3,000,000
Total Cost.....	\$30,000,000

When these figures are added up it will be seen that this housing will cost over \$121,000,000. The Government of Newfoundland will have to guarantee or otherwise provide \$30,000,000 of this, but the Government of Canada will have to provide three times as much as their share. The result of this great expenditure over the coming years will give Newfoundland the greatest improvements she has ever known in good housing for the people, and at the same time this great construction programme will employ thousands of our people directly and other thousands indirectly. The Liberal Party believes that the true wealth of any land is not the money that is in the banks, but the homes, furnishing, Municipal services, good roads, schools, hospitals, water and sewer services, and a host of other good and useful things.

The Liberal policy is to help an ever larger number and proportion of the people to enjoy these material advantages of modern living.

## PROTECTING THE PUBLIC

### Protecting the public is important policy in Liberal blueprint

We have introduced legislation which protects men and women from unscrupulous salesmen and which guarantees that they will not be tricked into signing contracts that are harmful.

We will set up a Law Reform Commission which will look into the best way to make sure that advertising is made fair and honest. We will also ask the Commission to see if the cost of legal fees and real estate fees can be lowered, thus bringing down the cost of buying a home.

We will join with the Law Society of Newfoundland to make sure that any person who needs a lawyer's services will be able to get those services. We have made sure that people get help so that they do not go hungry, we look after people who need medical care and we will now make sure that no person is deprived of a lawyer's help just because he cannot pay the lawyer's fees.

We will introduce legislation to force loan companies to tell a borrower in dollars and cents how much interest he will have to pay on his loan. We will make sure that

loan companies tell a person who wants to borrow money plainly and clearly any other charges that he may have to pay. These new laws will make sure that a person who is buying on an installment plan is told how much he is paying for the article itself and how much he is paying in interest and other charges.

These laws will stop the few companies who try to trick men and women, and will also protect the great majority of the companies who are providing honest and fair treatment.

We will follow the example set by some of the world's most progressive countries, such as Sweden and New Zealand, by asking the House of Assembly to appoint a Parliamentary Commissioner. The Parliamentary Commissioner will not work for the Government and he will not be a civil servant. He will be a servant of the House of Assembly, the people's House. His job will be to make sure that no Newfoundlander is treated unfairly or improperly by any Government agency. Any Newfoundlander who has a complaint against a Government agency will be able to take it to the Parliamentary Commissioner who would make the necessary investigation and recommend to the House of Assembly what action should be taken.

## TOURISTS, HOTELS, RECREATION

Here is the  
foundation  
we have built

Trans Canada Highway, highroads, secondary highroads, local roads, paving—all of these can be regarded as the foundation for Newfoundland's recreational and tourist development. The Government have, by their policy of lending or guaranteeing money, succeeded in getting hotels, motels or other tourist accommodation established at:

Badger's Quay  
Baie Verte  
Bay Roberts  
Bonne Bay  
Carbonear  
Charlottetown  
Clarenville  
Charleston  
Corner Brook  
Deer Lake  
Donovan's  
Dunville  
Fogo  
Fortune  
Gander  
Glenwood  
Goobies  
Grand Falls  
Kelligrews  
Labrador  
Mackinson's  
Marystown  
Musgravetown  
Pasadena  
Port Blandford  
Port Union  
Port aux Basques  
St. John's  
Steady Brook  
Stephenville  
St. George's  
Swift Current  
Terra Nova

Trinity  
Trinity West  
Norris Arm  
Whitbourne  
Windsor

The Government have created a flourishing Tuna Sports Fishery in Newfoundland.

The Government have established many parks and camp sites, described elsewhere in this document.

The Government have published many millions of tourist pamphlets and brochures and circulated them throughout the world.

The Government have produced numerous motion pictures for showing in movie theatres and on TV in hundreds of cities in North America and Europe.

The Government launched Come Home Year, 1966.

The Government have succeeded in keeping our highways free of unsightly advertising signs, billboards, hordings, such as deface so many of the highroads in other Provinces.

## Liberals set \$100,000,000 target for Newfoundland tourist industry

1

We will continue our policy of inviting and assisting people to establish hotels, motels, tourist cabins and other forms of accommodation for the travelling public, and this, together with our road programme, will form the basis of a fast-growing tourist industry. Our target is 500,000 tourists visiting the Province each year and spending \$100,000,000 every season.

2

We will, within a few months, hold a conference of all persons and organizations in the Province who are concerned with preserving and increasing the game-fish, game-animals and all the other attractions generally for the use of our own population and that of visitors to our Province. The very great increase in the number of roads, and the subsequent increase in the number of cars, have caused hundreds of thousands of our people to travel widely throughout the Province, and it is becoming very clear that Newfoundland is in grave danger of losing her game-fish, game-birds, game-animals, and of spoiling the natural beauty of her countryside. It is our hope that ways and means may be found in this conference, and the right public sentiment stimulated, to create a policy that will be successful in dealing with this problem.

## ELECTRICITY

Here is the  
foundation  
we have built

**Cheap power  
is the base for  
Newfoundland's future**

Twin Falls power development  
(300,000 H.P.) development at  
Twin Falls, Labrador.

Bay d'Espoir power development.  
(300,000 H.P., increased by 300,000  
H.P. to a total of 600,000 H.P.)  
An additional 400,000 H.P. will bring  
that total to 1,000,000 H.P.

Construction of a great transmission  
grid to carry power from Bay d'Espoir  
and other sites all over the Island.

Electricity in Central Newfoundland  
converted from 50 cycle to 60 cycle.

Electricity in Western Newfoundland  
converted from 50 cycle to 60 cycle.

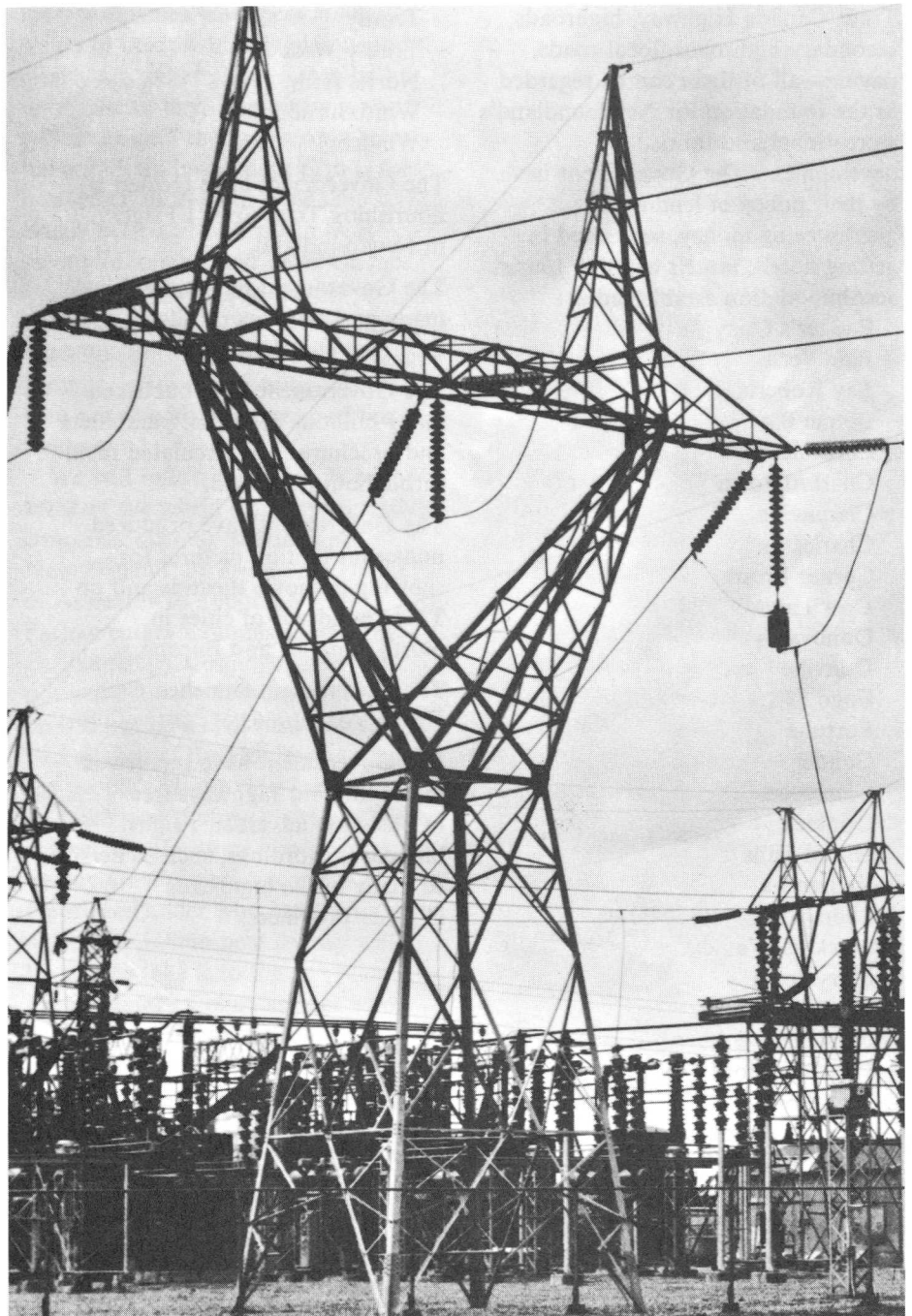
Rural electrification introduced into  
284 settlements with over 100,000  
population, at a cost of \$17,000,000.

Government paid a large proportion  
of the monthly electric bills in rural  
electrification areas.

Government decided to pay a still  
larger proportion of these  
monthly bills.

Government announced that next  
year all electric light rates in this  
Province will be reduced to below  
one cent a kilowatt hour.

Much hard work done to get  
Churchill Falls developed.



## ELECTRICITY

Here is the  
Liberal Blueprint  
for the future

**Tomorrow's  
low-cost power  
will create even  
more jobs**

**1**

The Government will do away with diesel electric plants in every place in Newfoundland where main-line hydro-electricity can be carried, so as to give all people an equal chance to get cheap electricity.

**2**

A very low price will be offered to industries willing to establish in Newfoundland, and employing Newfoundlanders, and this policy will be carried out with the deliberate intention of encouraging industrial manufacturing companies to come to Newfoundland from other parts of the world. The Government will treat low-cost electric power as one of the principal means of bringing about the rapid industrialization of the Province.

**3**

The establishment of heavy industries based on low-cost power will make it possible for numerous small secondary industries to succeed, and the Government will make a strong effort to bring about the establishment of a substantial number of such light industries and commercial enterprises based on heavy industries.

**4**

The Government will follow the policy of regarding the production and sale of large amounts of electricity as something which is not to be carried on for the sake of a

direct profit to be made out of the sale of the power, but rather as a means of attracting industry to the Province. It is the Government's belief, and on this belief the Government have established their policy, that far greater benefits can be derived for Newfoundland by the establishment of industries than merely by the making of profit out of the sale of power.

**5**

It will be the Government's policy, where heavy industry is established upon the basis of low-cost power, to offer practical inducements to such industries to use the products of their plants as the raw materials in other plants. For example, when an aluminium industry is established in this Province there would seem to be sound reason why at least some of the raw aluminium produced should be used as the raw material in factories producing aluminiumware of many kinds, so that all of the raw aluminium produced in the large aluminium plant would not be shipped out of the Province.

**6**

The Government will arrange to have electric power sold to householders at especially low prices (lower than for other purposes) when used for heating purposes. It is the Government's belief that most of the homes, schools, shops, public buildings and other structures in this Province can be heated more cheaply

and cleanly by electricity than by any other means, and it is our ambition to have Newfoundland lead all other parts of Canada in the consumption of electricity for heating homes and other buildings.

**7**

It is not generally known that millions of horsepower of electricity can be developed in Labrador from rivers and watersheds quite apart from the Churchill.

We requested BRINCO to survey the other great rivers in Labrador, and their report to us shows that some 6,000,000 H.P. can be produced on them.

Our policy is to bring all of that power to Newfoundland and make it available to new industries that will establish in this Province.

Power is one of the greatest parts of our heritage, and we are determined to develop it for the benefit of all our people, now and in the future.

## Contents

## Building new highroads to a better life

Statement by Joseph R. Smallwood, Leader of the Liberal Party	P.1	Bigger industries and cheap power will turn expansion into a boom	P.20	Protecting the public is important policy in Liberal blueprint	P.37
Where will the money come from?	P.2	Government has financed many new fish plants and 2,587 fishing boats	P.22	Trans-Canada Highway, new hotels build tourist opportunities	P.38
Newfoundlanders have been building a great new pride in education	P.7	Fisheries Industry will modernize and expand to double its present size	P.23	Liberals set \$100,000,000 target for Newfoundland tourist industry	P.38
The Liberal Party's 29-point program for improving the standards of education	P.8	New farmland, new parks, better forest management are Liberal achievements	P.25	Cheap power is the base for Newfoundland's future	P.39
A proud record of achievement in hospitals and public health	P.13	Liberals offer new camps, new parks, better farming	P.28	Tomorrow's low-cost power will create even more jobs	P.40
Medicare, 1700 new beds; improved medical training in the Liberal program	P.14	Not one person left out in expanding welfare services	P.29		
Since Confederation we Newfoundlanders have been building new highroads to a better life—2,300 miles of them	P.17	Children and old folks benefit from Liberal blueprint for the better life	P.31		
3,000 miles of paving in the Liberal program	P.18	Our link to Labrador, new Labrador highway vital to Newfoundland's future	P.32		
New industries, new mines, new jobs, better wages —the foundation of economic development	P.19	Running water, sewers, lights bring a better life to Newfoundlanders	P.33		
		More money will be paid to towns to improve and expand vital services	P.35		

**Here is the  
Liberal Blueprint  
for the future**

**Pave 3000 miles of  
roads**

**Build 1000 miles of  
new roads**

**Build the Labrador  
Highway**

**Build the Strait of  
Belle Isle Tunnel**

---

**Establish new  
industries based on  
cheap power**

**Reduce price charged  
for electricity**

---

**Build or rebuild  
500 schools**

**Finance great  
expansion of the  
university**

**Greatly expand the  
fisheries college**

**Greatly expand the  
technical college**

**Build 6 new  
vocational schools**

**Raise teachers'  
salaries**

---

**Build several  
new hospitals  
Adopt medicare**

---

**Start a big new  
housing programme**

**Build new airports  
and air strips**

**Finance many new  
fishing boats, etc.**

---

**Increase aid to  
municipalities**

**Finance many new  
water and**

**sewer systems**

**Help to finance**

**several new arenas**

---

**Establish many new  
parks and camp sites**

**Establish many  
country-cottage sites**

---

**Establish 4 new cold-  
storage warehouses  
for farmers**

**Start new  
land-clearing and  
bog-reclamation  
programme**

**Establish 1,000,000  
acres of new  
woodland**

**Make the coming years Newfoundland's greatest years.**

Published by the Liberal Party of Newfoundland and Labrador, 301 Hamilton, St. John's.



**Make the  
coming years  
Newfoundland's  
greatest  
years  
VOTE  
LIBERAL**