

Prairie Manifesto Project

Jared Wesley
PhD Candidate
Department of Political Science
705 Social Sciences Building
University of Calgary
2500 University Drive NW
Calgary, Alberta T2N 1N4
phone: 1.403.220.4184
fax: 1.403.282.4773
email: jjwesley@ucalgary.ca

Province: ☐ Alberta ☐ Saskatchewan ☒ Manitoba

Party: CCF Election Year: 1953

AA = Alberta Alliance
CON = Conservative Party
LP = Liberal-Progressive Party
PC = Progressive Conservative Party
SKP = Saskatchewan Party
UFM = United Farmers of Manitoba

CCF = Cooperative Commonwealth Federation
LIB = Liberal Party
NDP = New Democratic Party
SC = Social Credit
UFA = United Farmers of Alberta
WCC = Western Canadian Concept

Type of Document:

☒ Platform

☐ Constitution

☐ Speech

☒ Brochure / Leaflet PT

☐ Newspaper

☐ Advertisement

☐ Other: _____

Date Collected:

2006 / 08 / 17
YYYY MM DD

Source:

MB-PARC (MG14DB - Box 17/8)

AB = Alberta
SK = Saskatchewan
MB = Manitoba

UofA = University of Alberta
UofC = University of Calgary
UofR = University of Regina
UofS = University of Saskatchewan
UofM = University of Manitoba
BU = Brandon University

PARC = Provincial Archives
LEG = Legislative Library
SPC = Special Collections
ULIB = University Library

Candidates

and, and came with
in 1903.

Hugh MacKinnon in
has three daughters.
from 1930 to 1940 she
years and served as

tario. Besides acting
e, she was active in

CCF movement since
Woodsworth.

sociation and O.E.S.
nadian Legion.

are of human beings
planning the world

1904. Mr. Turner
took an active part
id for a number of
al union, the Cana-
Transport Workers,

living standards of
with the CCF. He
Constituency Asso-
ith Federal Consti-

n. He has lived in

CCF

p.m. D.S.T.)

ADVANCE with the CCF IN ST. BONIFACE CONSTITUENCY

WORK AND VOTE FOR

MRS. KAY

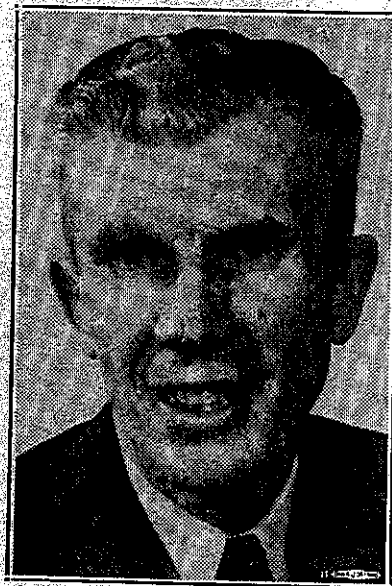
MACKINNON



DAVE

TURNER

MARK YOUR BALLOT
1, 2, In Order of Your Choice



PHONE

42-2403
20-7760
20-3533

Manitoba CCF Platform

The CCF will build a more equitable and co-operative society in which mutual aid and social ownership will be fundamental principles. To this end the CCF in Manitoba advocates the following:

1. A province-wide hospitalization plan.
2. Re-organization of our educational system in order to provide more qualified teachers, greater efficiency, and equality of opportunity.
3. Government automobile insurance.
4. Re-organization of municipalities in co-operation with the Union of Manitoba municipalities.
5. Grants to municipalities for road construction on the basis of need.
6. Orderly marketing of farm, fur and fish products through marketing boards on which producers would be fully represented.
7. A system of compensation for crop damage from game animals and birds.
8. Assistance to fisherman in rehabilitating the fishing industry.
9. A program of industrial development to provide employment and raise the standard of living.
10. A provincial Labor Code.
11. An independent commission on redistribution of electoral representation.
12. The right to vote at eighteen years of age.
13. Free treatment for the victims of cancer, polio, and other disabling diseases.
14. Assistance to old age and blind pensioners in need, and to the recipients of Mother's Allowance, including medical, dental, optical and hospital care.

What Ach

Here are re
12, 1952, re
sive time . .

The BEST

For just \$1
complete h
more hosp
also has th
in Canada.

The BEST Continental

Every mot
\$5.00 to \$20
\$16.00 the
that costs
centres. In
ance for ev

The BEST

CCF farm
tion of Sa
to increase
has been e
1944.

The BEST

The CCF C
tinent, Can
vacation w
wants to or

Why

What CCF Planning has Achieved in Saskatchewan

Here are reasons why the people of Saskatchewan, on June 12, 1952, re-elected a CCF Government for the third successive time . . .

The BEST Hospital Plan In North America

For just \$10 a year per person, or a maximum of \$30 a family, everyone gets complete hospital care anytime — no costly extras — and Saskatchewan has more hospital beds per population than any other province. Saskatchewan also has the best mental health services, and the only air ambulance service, in Canada. Cancer treatment is completely free.

The BEST Auto Insurance Plan On The Continent

Every motorist is covered by the auto insurance plan costing only from \$5.00 to \$20.00 per year depending upon the age of the car, and for another \$16.00 the motorist may buy the "package policy" which gives coverage that costs from \$50.00 up in rural Manitoba, and from \$75.00 up in urban centres. In addition the Saskatchewan plan includes auto accident insurance for everyone with benefits up to \$10,000.

The BEST Farm Legislation

CCF farm legislation is planned to meet the needs of the big rural population of Saskatchewan. It provides feed and fodder reserves, scholarships to increase veterinary services, generous aid to young farmers. No farmer has been evicted from his farm since the CCF became the Government in 1944.

The BEST Labor Legislation

The CCF Government has provided the finest labor legislation on the continent, Canada's highest minimum wage, best compensation laws, two weeks' vacation with pay, eight paid statutory holidays by law, the right of civil servants to organize and the abolition of company unions.

Why Not in Manitoba?



A Word About Your **CCF** Candidates IN ST. BONIFACE

MRS. KAY MacKINNON

was born in Sheffield, England, and came with her parents to St. Boniface in 1903.

She was married to Mr. Hugh MacKinnon in Sioux Lookout in 1922 and has three daughters.

As a resident of Hudson Bay, Saskatchewan, from 1930 to 1940 she was engaged in local welfare work during those trying years and served as chairman of the local school board.

In the early forties she lived in Rainy River, Ontario. Besides acting as organist and choir leader in the United Church there, she was active in the Red Cross and CCF work.

Mrs. MacKinnon has been associated with the CCF movement since its inception and was a personal friend of the late J. S. Woodsworth.

She is a member of the world Government Association and O.E.S. and a Past President of the Ladies' Auxiliary of the Canadian Legion.

Mrs. MacKinnon is keenly interested in the welfare of human beings and believes that with a lot of hard work and good planning the world would be made a better place in which to live.

DAVE TURNER

Born in Portage la Prairie in 1904. Mr. Turner came to Winnipeg in 1927. He took an active part in union organization work and for a number of years was chairman of his local union, the Canadian Brotherhood of Railway Employees and other Transport Workers, Division 253.

Dave Turner's keen desire to help raise the living standards of Canadian workers soon brought him in active contact with the CCF. He is the past chairman of the St. Boniface CCF Provincial Constituency Association and is at present chairman of the Winnipeg South Federal Constituency Association.

Dave Turner is married and has three children. He has lived in St. Boniface Constituency for twenty-five years.

June 8 VOTE CCF

Polls Open 8 a.m. to 8 p.m. (9 a.m. to 9 p.m. D.S.T.)



ADVA ST. BON



TUR

MARK Y
1, 2, In Order