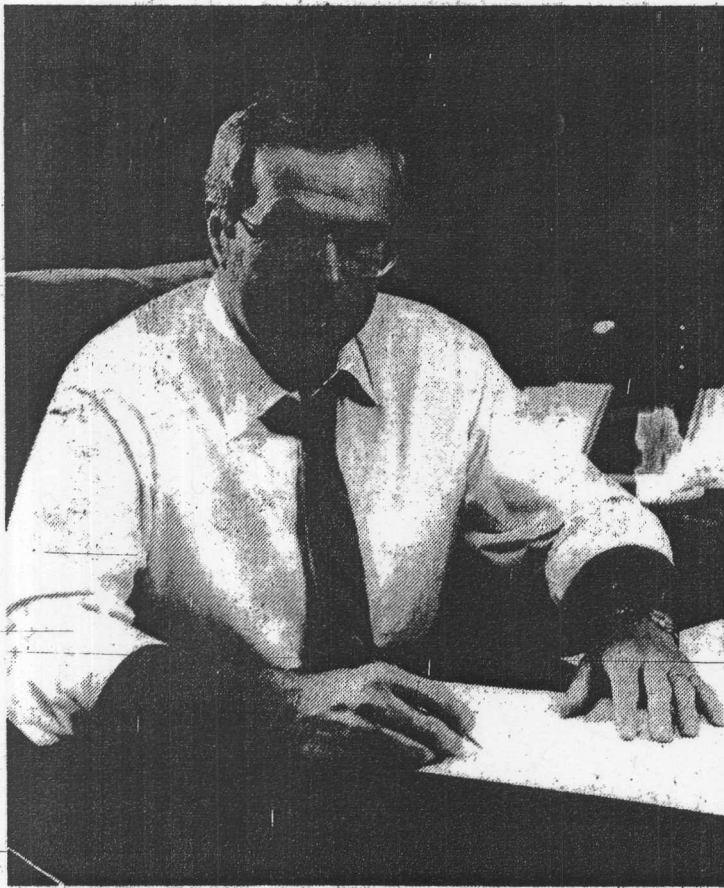


26 p.13

# ***For the Island. Today. Tomorrow. Together.***



In 1979 we made a pledge to work for the good of the Island, the whole Island, and for all the people who live here.

That pledge has become progress.  
Much has been accomplished.

- Local communities have found new pride and vitality.
- We have brought responsible fiscal management to the affairs of government.
- The Vet College will admit its first class in September.
- The new red meat plant will open next month.
- Power rates have been reduced approximately 25%.

Today, we seek a new mandate from you, the people of Prince Edward Island, to continue the leadership and direction our Province deserves.

Much more can be accomplished.

- To further develop our primary resources and protect our way of life.
- To manage government effectively and prudently.
- To provide and ensure jobs.
- Introduce Pharmacare for the sick and elderly.
- Deal firmly and effectively with the Federal P.C. Government.
- Make home ownership easier through loans to community credit unions.
- Offer our sons and daughters hope, and future opportunity.

We can do it. Together! All, it takes is your support.  
We've got a good thing. Lets keep it going.

***Vote Jim Lee and the PC Team on Monday, April 21, 1986***

29 p.15

# ***For the Island. Today. Tomorrow. Together.***

## ***Kick-Off Rally***

**Kensington Regional High School  
Monday March 31  
8 p.m.**

Join your friends and neighbors for the opening Rally  
of the 1986 Campaign.

### **Look at the Progress**

In his first term, Jim Lee and the P.C. Team have  
provided responsible effective government.

- Created 6000 jobs in the past 3 years
- Reduced power rates as much as 25%
- Strengthened the beef and hog industries
- Expanded the tourist industry across P.E.I.

### **Look at the Plan**

Building on the progress of the last four years Jim Lee  
and the P.C. Team have a realistic, affordable plan for  
the future, concentrating on the creation of quality jobs.

- Expand the Georgetown shipyard with the  
installation of a synchrolift
- Fund locally initiated economic projects, creating  
new jobs in our rural communities
- Foster Youth Employment — by building on the  
strength and ingenuity of young Islanders

**We Can do it together!**

Join us at Kensington Regional High School on  
Monday, March 31, at 8 p.m.

**We've got a good thing  
Let's keep it going**



***Vote Jim Lee and the PC Team on Monday, April 21, 1986***



association relative to government in the Maritimes Construction Management Development Council, which has The association's involvement in the Maritimes Construction Management Development Council, which has 1985 a good construction record at over \$200 million.



## FELLOW ISLANDERS:

There is a great deal of progress taking place in our Province, much of it generated by the dedication and hard work of individual Islanders. Many of those success stories and new developments are outlined in this Progress Edition.

Our population and labour force are growing steadily, and many jobs have been created. New companies have been welcomed to our communities, creating new opportunities across the Province.

Over the past year we have achieved a major reduction in energy rates, which has reduced electricity costs for business, industry, homeowners and communities.

The recent sale of the Prince Edward Hotel and Convention Centre to Canadian Pacific Hotels will assist in the further development of the convention industry. The Centre directly employs up to 200 Islanders, and generates over \$4 million of economic activity. This year we look forward to continued growth in the tourism industry, with developments in all regions of the Island.

In the next few weeks we will welcome the opening of the new Airport Terminal, improving passenger services for Islanders and visitors.

The beginning of operations of the new meat plant will ensure a processing facility for the hundreds of hog and beef producers in our Province.

This fall the Atlantic Veterinary College will welcome its first students. This will generate new economic activity and provide a valuable pool of expertise for our farmers and fishermen.

Health care services and facilities have been further developed, with the replacement and upgrading of some major facilities. Improvements have been made in the educational field with construction at several schools. Other new construction will take place in the year ahead.

Many Island communities have witnessed increased growth. Dozens of new small businesses have opened, creating many jobs, and reflecting confidence in the future of our communities and Province. Residential construction was up significantly over the past year, especially in the rural areas of our Island.

Based on the progress of the past, we can look to the future for even greater progress. The strong spirit of co-operation that exists among government, communities, and the private sector points to a better future. There are challenges to be met, but we have the people, the co-operative spirit, and the ability to meet those challenges.

JIM LEE  
Premier

abs, honors and awards chair-  
first vice-president, Edgar Ho-  
le Gallant.

## Inning Days'

Cross is the only health under-  
which provides an open enroll-  
period such as Easy Joining

of the goals of Blue Cross has  
been to make coverage avail-  
all Atlantic Canadians. Mr.  
said, "We recognize that due  
derwriting regulations some  
cannot obtain coverage nor

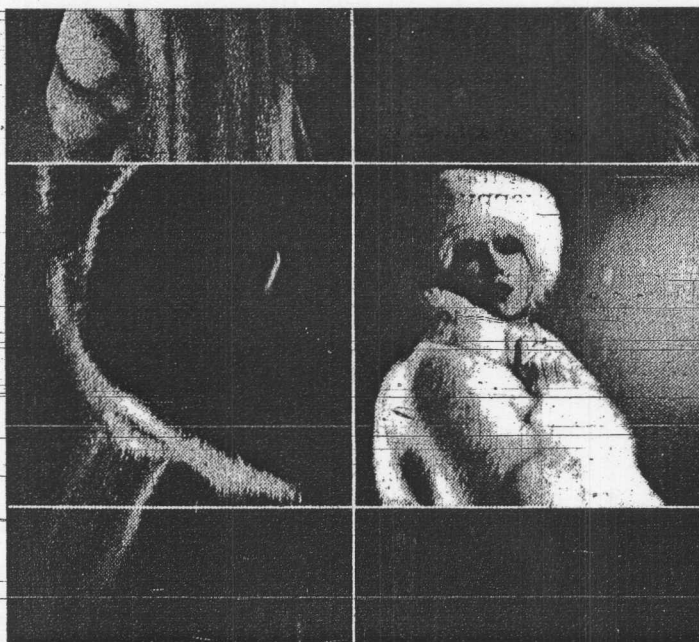
Easy Joining Days gives  
he opportunity to get that cov-  
One of the most unique experi-  
we have had with our open en-  
ment period was in 1976 when a  
ar-old New Brunswick resident  
up for coverage."

Last Easy Joining Days cam-  
was held in the fall of 1982.

that time 2,700 people took ad-  
ge of the coverage," Mr. Len-  
ted.

Year there will be two separate  
ment periods. The month of  
will be an open enrollment pe-  
or residents of New Brunswick  
ince Edward Island, while the  
of May will be open enrollment  
va Scotia and Newfoundland.

y Joining Days information is  
ble from participating Blue  
agents or contacting the near-  
ie Cross office.



- Full length raccoon and coyote,  
Eaton price, each 1,698.00 to 3,198.00
- Blue-fox coats, Eaton price, each 1,598.00
- Mink jackets with fox trim,  
Eaton price, each 1,798.00
- Raccoon and coyote jackets,  
Eaton price, each 1,398.00 to 1,898.00
- Plus, a special clearance of furs including  
mink, coyote, fox, raccoon, and muskrat,  
Eaton price, each 997.00 to 9,997.00
- Furs  
Personal Shopping Only.



Just say charge it  
on your  
Eaton's Account.



American Express,  
Visa and MasterCard are accepted  
for Personal Shopping Only.

**EATON**  
WHERE YOUR VALUE IS GUAR

# For the Island. Today. Tomorrow. Together.

## Job Creation.

During their first term, Jim Lee and the PC Team assisted in the creation of 6,000 jobs on  
Prince Edward Island.

## The Progress

In 1985 alone, over 200 Island firms and small businesses in more than 50 Island communities  
have been assisted in the creation of hundreds of new jobs.

On-island manufacturing and processing capacity has been expanded, creating new  
employment and increased economic activity for Islanders. Jim Lee and the PC Team are  
working with Agriculture, Fisheries, Tourism, Forestry, manufacturing and processing for  
a better Island.

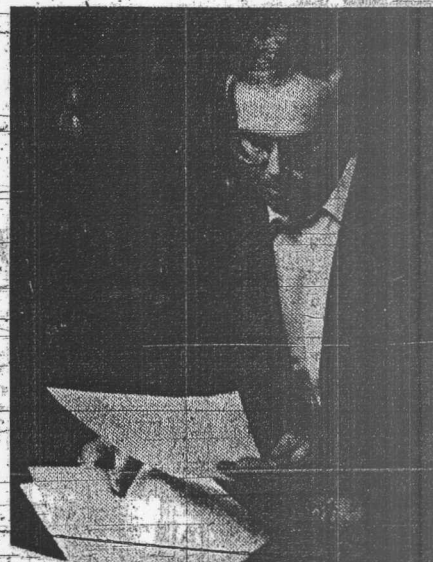
## The Plan

Our Primary industries will continue to be the cornerstone of our economy. Small businesses  
in local communities will be further assisted in creating jobs and reflecting local goals and initiative.

The Island economy will be expanded through the development of appropriate new industries.

Our treasured goal is to provide our sons and daughters with economic opportunity on the Island.

**Vote Jim Lee and the PC Team on Monday April 21, 1986**





irs, Ca-  
ned that  
m Den-  
driving  
slaugh-  
European  
perman-  
nada in  
ocessed  
ed stew  
him the  
is much  
reduced  
Comm-  
earlier  
old limit  
10,668  
t three  
hat had

tion rejected the offer at its annual meeting in Regina in March, pre-  
ferring to take a chance on getting the  
Canadian government to impose im-  
port duties against European beef.

Late in March, Revenue Canada  
imposed an interim duty of \$1.96 a ki-  
logram on Irish beef and \$1.56 on  
Danish beef.

Those duties represent the esti-  
mated value of subsidies paid to  
farmers in those countries and were  
even higher than Canadian cattlemen  
had expected.

The cattlemen's association says  
the subsidies make European beef ar-  
tificially cheap. Its wholesale price in  
Canada is about \$2.64 a kilogram,  
well below the prices paid for Can-  
adian-grown beef.

"Canadian producers can't be ex-  
pected to compete against such huge  
subsidies," says Stan Wilson, the cat-  
tlemen's association president.

**SURPLUSES GROW**

Rich subsidy programs have  
spurred European farmers to in-  
crease production. The result has  
been massive surpluses of grain,  
meat and other foodstuffs.

There's so much excess beef being  
produced in Europe, refrigerator  
ships have been tied up at seaports to  
act as floating freezers.

However, the initial victory by the  
Canadian cattlemen is only tempo-  
rary. In order to get the duties made  
permanent, the cattlemen must  
prove that the subsidized European  
beef is actually cutting into the mar-  
kets of Canadian farmers.

The Canadian Import Tribunal  
must rule on the necessity of the du-  
ties by July 25.

against subsidized European farm  
goods for fear the EEC will retaliate  
against Canadian food products.

Wilson said Ottawa must pursue the  
issue even further. The high level of  
European farm subsidies must be  
dealt with in a coming round of talks  
on GATT, the international General  
Agreement on Tariffs and Trade

Fire Chief Bill Gilli, LEFT, presents  
a plaque while town council member  
Bill Essery, RIGHT, presents a gift to  
retiring Alberton Fire Chief Leslie  
Hardy. Mr. Hardy has been fire chief  
for the past five years and has been

with the fire department for the past  
30 years. The presentations were  
made recently at the Revilo dinner in  
Alberton following an appreciation  
banquet for the firemen.

**TOSH Senior  
Jostens Finalist**

**SUMMERSIDE** — Darlene Worth, a  
senior at Three Oaks senior high school,  
is one of 100 finalists in the Jostens  
Foundation/National School Services  
Leader Scholarship Program.

Miss Worth,  
daughter of Har-  
vey and Norma  
Worth of Wilmot  
Valley, was one  
of more than  
1,000 high school  
students  
throughout Can-  
ada who applied  
for the award.  
Twenty-five  
\$1,000 schol-  
arships will be  
awarded will be  
announced this  
spring.



Selection of  
the finalists and winners is based on out-  
standing achievements in school and  
community activities, leadership expe-  
rience and academic excellence.

The Citizens' Scholarship Foundation  
of America, based in St. Paul, Minne-  
sota, administrators for the Jostens  
Foundation/National School Services  
Scholarship Programme, has selected  
the finalists and will select the winners  
by late April. Finalists who do not re-  
ceive scholarships will receive Certifi-  
cates of Recognition.

"The Jostens Foundations is com-  
mitted to developing quality education  
for today's educationn for today's young  
people and responding to the needs of  
Canada's youth," says Don C. Lein,  
president of the foundation.

Funds for the Jostens Foundations  
are provided annually by a major sup-  
port programme of Jostens, Inc., the  
world's largest manufacturer of class  
rings and yearbooks. Jostens also pro-  
vides recognition and motivation prod-  
ucts and services for education, busi-  
ness and athletics.

# For the Island. Today. Tomorrow. Together.

## A Better Deal with Ottawa.

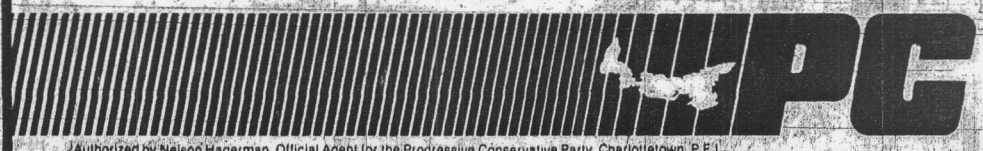
The key word in the Jim Lee style of government is "Together". Jim Lee is a team player. That's how he has been able to work so well with Ottawa for the good of all the Island. His style of "let's discuss it" politics has won us all these Ottawa-financed benefits:

- Electrical power costs reduced by as much as 25%;
- An Ottawa contribution for assistance to potato farmers;
- The new Veterinary College, with 170 new direct jobs.
- The new Red Meat Plant — a facility to support our farmers as well as saving jobs for the Island;
- 12 cost-shared agreements to benefit our communities.

These achievements, and all the achievements to come, are brought about by the Jim Lee style of cooperation on behalf of all the Island. Talk is cheap. But cooperation, coupled with a responsible attitude and care for Island funds, have made Jim Lee the best spokesman in Ottawa we've ever had. He doesn't fight—he simply wins—for all Islanders.

Look at the record and look to the future. On April 21st, vote for the PC candidate in your riding.

**Vote Jim Lee and the PC Team  
on Monday, April 21, 1986**



Authorized by Nelson Hagerman, Official Agent for the Progressive Conservative Party, Charlottetown, P.E.I.

12-p.19

# ***For the Island. Today. Tomorrow. Together.***

**"The strength of the Island is the strength of our people and our communities. Confidence in this belief is fundamental to the work of our Government."**

**Premier Jim Lee**

**Highlights of the PC Government programs in:**

**Education, Small Business, Fisheries, Pharmacare, Housing, Federal-Provincial Relations**



**Premier Jim Lee**

## **Education**

**"The Island is rich in natural resources, but none more valuable than the potential of our young people. Our Government recognizes this potential and seeks ways to give it expression."**

- more opportunities through the services of Holland College, U.P.E.I. and the Vet College.
- parent-teacher involvement in education.
- improved and new schools across the Province.



**Honourable  
Leone Bagnall,  
Minister of Education**

## **Federal-Provincial Relations**

**"The Federal PC Government listens and responds to the concerns we raise on behalf of Islanders."**

- assistance for lower electricity costs.
- 12 development agreements totalling over \$200 million.
- assistance for potato producers.
- Atlantic Veterinary College for P.E.I.



**Honourable  
Fred Driscoll,  
Minister Responsible  
for Intergovernmental  
Relations**

## **Fisheries**

**"The fishery is important to the economic base of many of our Island communities."**

- the crab fishery is the start of a whole new industry.
- increased Island processing of fish.
- quality improvements of fish landings.

**Support for Island fishermen.**



**Honourable  
Roddy Pratt,  
Minister of Fisheries**

## **Housing**

**"It is a priority of Government for families to own their home and live in the community of their choice."**

- together with local credit unions, a program to ensure financing for housing across the Island.
- increased senior and low rental housing construction.
- home repair program.



**Honourable  
George McMahon,  
Minister of Housing**

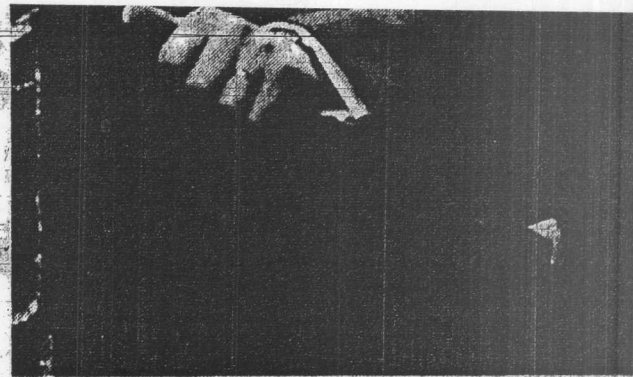


# the work of our Government.

## Premier Jim Lee

Highlights of the PC Government programs in:

Education, Small Business, Fisheries,  
Pharmacare, Housing,  
Federal-Provincial Relations



Premier Jim Lee

### Education

"The Island is rich in natural resources, but none more valuable than the potential of our young people. Our Government recognizes this potential and seeks ways to give it expression."

- more opportunities through the services of Holland College, U.P.E.I. and the Vet College.
- parent-teacher involvement in education.
- improved and new schools across the Province.



Honourable  
Leone Bagnall,  
Minister of Education

### Federal-Provincial Relations

"The Federal PC Government listens and responds to the concerns we raise on behalf of Islanders."

- assistance for lower electricity costs.
- 12 development agreements totalling over \$200 million.
- assistance for potato producers.
- Atlantic Veterinary College for P.E.I.



Honourable  
Fred Driscoll,  
Minister Responsible  
Intergovernmental

### Fisheries

"The fishery is important to the economic base of many of our Island communities."

- the crab fishery is the start of a whole new industry.
- increased Island processing of fish.
- quality improvements of fish landings.

Support for Island fishermen.



Honourable  
Roddy Pratt,  
Minister of Fisheries

### Housing

"It is a priority of Government for families to own their home and live in the community of their choice."

- together with local credit unions, a program to ensure financing for housing across the Island.
- increased senior and low rental housing construction.
- home repair program.



Honourable  
George McMahon,  
Minister Responsible  
for Housing

### Small Business

"The prosperity of the Island depends on small community businesses."

- Small Business Incentive Program.
- Rural Business Centre Program.
- Community Economic Development Fund.
- P.E.I. Development Agency



Honourable  
Wilbur MacDonald,  
Minister of Industry

### Pharmacare

"Pharmacare is a major addition to our social programs and needed assistance for seniors and others."

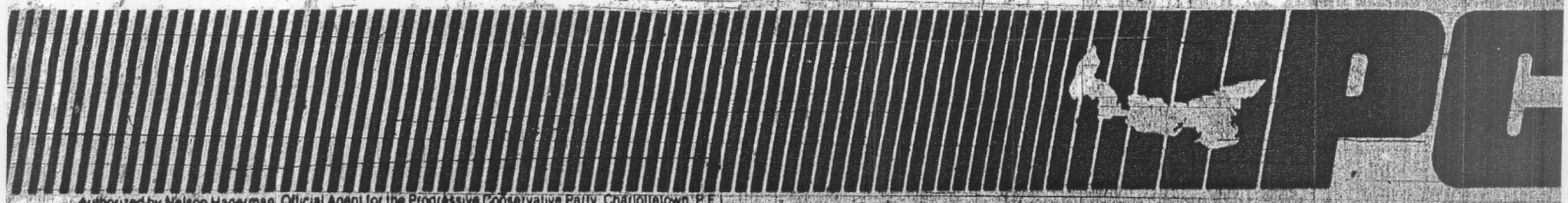
- universal pharmacare program for seniors.
- financial assistance for those with high drug costs as a result of chronic illnesses.



Honourable  
Albert Fogarty,  
Minister of Health

Much has been achieved during the first term of the Jim Lee Government.  
Much more remains to be accomplished.

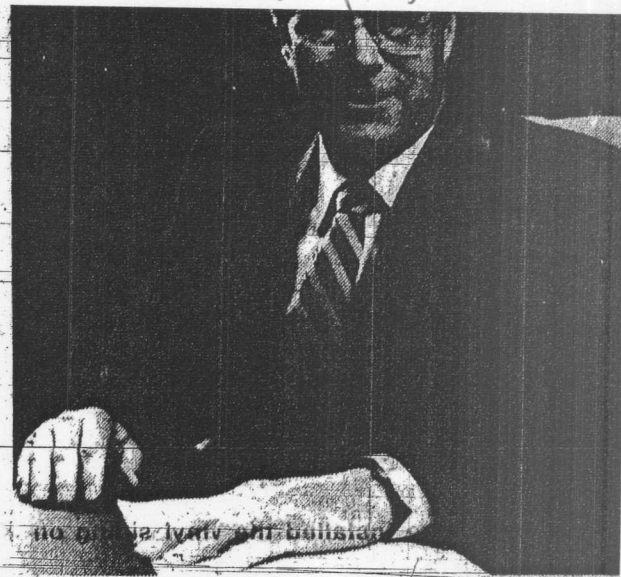
**Vote Jim Lee and the PC Team on Monday, April 21, 1986**



**"The strength of the Island is the strength of our people and our communities. Confidence in this belief is fundamental to the work of our Government."**  
Premier Jim Lee

**Highlights of the PC Government programs in:**

**Agriculture, Forestry, Tourism, Transportation, Community Development, Health Care**



**Premier Jim Lee**

### **Forestry**

**"Approximately 50% of the Island land mass is covered with forest. This resource is owned by 1500 woodlot owners."**

- more than 2 million trees will be planted across the Island this year.
- hundreds of woodlot owners are participating in our Private Woodlot Management Program to improve our woodlots.
- new wood energy projects have been constructed.



**Honourable Fred Driscoll**

### **Tourism**

**"It is our objective to expand markets and attract tourists to all parts of P.E.I."**

- initiatives to develop tourism in all parts of P.E.I.
- in close cooperation and consultation with the industry, to further develop tourism.
- continued programs to expand the season.
- establishment of a full time Department of Tourism.



**Honourable Gordon Lank**

### **Community Development**

**"Our way of life centers around community, the rink, the school, the local store, farmers, fishermen, business people — all contribute to community spirit."**

- Community Economic Development Fund.
- Home Care and Support Program.
- assistance to voluntary organizations.
- family support services.
- assist handcraft and cultural industries.



**Premier Jim Lee**

### **Transportation**

**"An efficient transportation system is essential to the growth of our Island economy and is essential as a tool of regional economic development."**

- continued improvement, upgrading, resurfacing and paving of Island highways.
- Roadside Beautification Program to complement the natural beauty of the Province.
- improvement to Island bridges reflecting a greater concern for the environment.
- deal firmly with Ottawa to provide efficient and economic ferry service to the mainland.



**Honourable Peter Pope**

### **Health Care**

**"Our ambition is to continually improve the health care services available to Islanders in their own communities across the Island."**

- community hospitals will be maintained and upgraded.
- support for community health care facilities and programs.
- completion of the special care facility at Beach Grove.
- Home-based Care Program will be expanded.
- no new fees for home services.



**Honourable Albert Fogarty**

### **Agriculture**

**"The family farm is central to the economic and social life of this Province."**

- support for the family farm and beginning farmers.
- support for small-scale agriculture and part-time farmers.
- right to farm legislation.



**Honourable Prowse Ch.**

**Much has been achieved during the first term of the Jim Lee Government.**