

Prairie Manifesto Project

Jared Wesley
PhD Candidate
Department of Political Science
705 Social Sciences Building
University of Calgary
2500 University Drive NW
Calgary, Alberta T2N 1N4
phone: 1.403.220.4184
fax: 1.403.282.4773
email: jjwesley@ucalgary.ca

Province: Alberta Saskatchewan Manitoba

Party: CCF Election Year: 1955

AA = Alberta Alliance
CON = Conservative Party
LP = Liberal-Progressive Party
PC = Progressive Conservative Party
SKP = Saskatchewan Party
UFM = United Farmers of Manitoba

CCF = Cooperative Commonwealth Federation
LIB = Liberal Party
NDP = New Democratic Party
SC = Social Credit
UFA = United Farmers of Alberta
WCC = Western Canadian Concept

Type of Document:

- Platform Constitution
 Speech Brochure / Leaflet
 Newspaper Advertisement
 Other: _____

Date Collected: 2006 / 06 / 08
 YYYY MM DD

Source: Glenbow

AB = Alberta
SK = Saskatchewan
MB = Manitoba

UofA = University of Alberta
UofC = University of Calgary
UofR = University of Regina
UofS = University of Saskatchewan
UofM = University of Manitoba
BU = Brandon University

PARC = Provincial Archives
LEG = Legislative Library
SPC = Special Collections
ULIB = University Library

Check Each

Planck

Before

Marking

Your

Ballot

Don't Mark

LIST—

1. GENERAL ADMINISTRATION

2. WELFARE

3. HEALTH

4. ELECTRIC POWER

5. MARKETING LEGISLATION

6. LABOR

7. NATURAL RESOURCES

How You Mark Your Ballot is Your Own Business

Because it affects you and your family be sure to mark it the RIGHT WAY!

CHECK THE LIST BEFORE YOU THROW YOUR BALLOT AWAY FOR SOMETHING YOU ARE NOT IN FAVOR OF

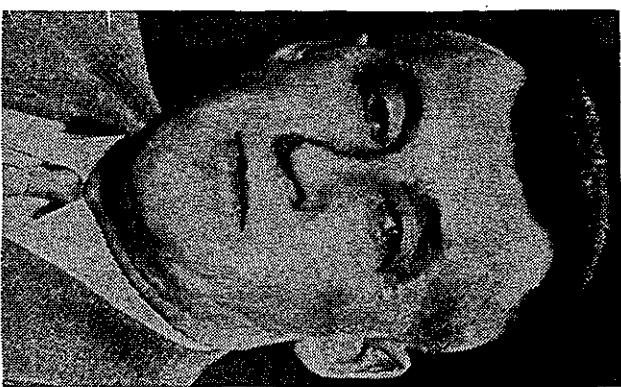
Mark your ballot 1 for

BRUCKER, C.C.F.

Section Schedule

C. C. F.

PLATFORM



K. L. BRUCKER

VOTE C.C.F.

for

Humanity First

CO-OPERATIVE COMMONWEALTH FEDERATION PLATFORM

1. GENERAL ADMINISTRATION

TRATION

- (a) Honest, careful administration of the affairs of the province to obtain for the people the best possible value for their tax dollars.
- (b) Reduction of municipal taxation by the province assuming financial responsibility for health, education and other services initiated by the provincial legislature.

3. HEALTH

- (a) Medical services that remove the fear of crushing medical and surgical bills.
- (b) An all-provincial hospitalization plan that will eliminate the inequalities of the scheme now in operation.

5. MARKETING LEGISLATION

Marketing legislation similar to that proposed by the Alberta Federation of Agriculture and the Farmers' Union of Alberta.

6. LABOR

Improvements in the Workmen's Compensation Act and other Labor legislation, the establishment of a Department of Labor.

4. ELECTRIC POWER

- (a) The establishment of a Provincial Authority which will:
 - (a) acquire ownership of the privately owned electric power systems of the province;
 - (b) assume the debts already contracted by farmers to build rural lines and refund to farmers monies they have paid to build lines;
 - (c) rapidly extend rural lines, without cost to the farmers, to all areas where it is economically feasible to do so.

7. NATURAL RESOURCES

- (a) Reduce the price of gasoline and other oil products to Alberta consumers.
- (b) Increase oil revenue by developing Crown Land in proven fields by public ownership.
- (c) Call for tenders on leases on a royalty basis to enable co-operatives and Alberta investors to compete with foreign oil corporations.
- (d) Control disposition of natural gas supplies to serve the best interests of the people of Alberta and Canada.

2. WELFARE

- (a) Increase Widows' and Disabled Persons' pension and supplementary allowances for pensioners and raise income ceilings.
- (b) Enactment of the bill to provide Jubilee Bonuses.
- (c) Co-operation with the federal and municipal governments to construct low rental housing units through the National Housing Act.
- (d) Provision of automobile insurance at cost that will protect every resident without the expense of court action.

MEDICINE HAT IS TRADITIONALLY A SOCIALISTIC CITY—HAS OWNED ITS OWN UTILITIES FOR YEARS—TO THE ECONOMIC BENEFIT OF ALL ITS CITIZENS